



**Northern Kentucky University**  
**Board of Regents Materials**

**September 8, 2016**

# TABLE OF CONTENTS

## MATERIALS

## AGENDA

September 8, 2016, Meeting Agenda.....	3
--	---

## MINUTES

April 27, 2016, Board Meeting Minutes.....	4-11
May 18, 2016, Board Meeting Minutes.....	12-13
July 20, 2016, Board Meeting Minutes.....	14-15

## PRESIDENTIAL REPORTS

B-1) Facilities Management Report.....	16-26
B-2) Research/Grants/Contracts Report (April 1, 2016 – June 30, 2016).....	27-32
B-3) Research/Grants/Contracts Report (July 1, 2016 – July 31, 2016) .....	33-35
B-4) Fundraising Report (July 1, 2015 – June 30, 2016).....	36
B-5) Organizational Changes Report.....	37-39
B-6) NKU/NKUF Partnership	

## PRESIDENTIAL RECOMMENDATIONS

C-1) Academic Affairs Personnel Actions .....	40-122
C-2) Non-Academic Personnel Actions.....	123-129
C-3) Major Gifts Acceptance.....	130-131
C-4) Naming Recommendations.....	132-135
C-5) Faculty Emeritus Status Appointments .....	136-140
C-6) New Graduate Certificate Program – Emergency Management .....	141
C-7) Nurse Anesthesia Program Schedule of Tuition and Fees .....	142-143
C-8) Organizational Chart Update .....	144-145

**AGENDA**  
**Northern Kentucky University**

---

**Regents Dinner**  
**Wednesday, September 7, 2016 – 6:00 p.m.**

**6:00 p.m.**

- Regents Dinner at President's Home (Ft. Thomas, KY)
- 

**Joint Finance and Policy Meeting**  
**NKU, Student Union, 104 – Thursday, September 8, 2016 – 9:00 a.m.**

**9:00 a.m.**

**A. Joint Finance and Policy Committee:**

- |  |   |
|--|---|
| 1. College of Education and Human Services | (Ott Rowlands, Reed)  |
| 2. Student Affairs                         | (Bacevich, Gadenberger, Krebs, Resing, Sherry, Sintos Coloma)   |
| 3. College of Health Professions           | (Nadler, D. Calderon, Pena, Loza, Nunez)                        |
| 4. Heath Innovation Center                 | (Ott Rowlands, Scalise-Smith, Davidson, Patten, Fieler, Cooney) |
|  | (Mearns)  |

**Health Innovation Center Topping Out Ceremony**  
**Health Innovations Center Building Site – September 8, 2016 – 11:30 a.m.**

**Board Lunch**  
**NKU, Student Union 109 – September 8, 2016– 12:15 p.m.**

**11:30 a.m.**

**Board of Regents Meeting**  
**NKU, Student Union, 104 – Thursday, September 8, 2016– 1:00 p.m.**

**1:00 p.m.**

- Call to Order
- Swearing in of New Regents
- Roll Call
- Approval of April 27, 2016, Board Minutes
- Approval of May 18, 2016, Board Minutes
- Approval of July 20, 2016, Board Minutes
- Presidential Comments
- Joint Finance and Policy Committee Summary, Secretary of the Board of Regents

**1:20 p.m.**

**B. Presidential Reports:**

- |   |                |
|---|----------------|
| 1. Facilities Management Report                                     | (Hodges Moore) |
| 2. Research/Grants/Contracts Report (April 1, 2016 – June 30, 2016) | (Ott Rowlands) |
| 3. Research/Grants/Contracts Report (July 1, 2016 – July 31, 2016)  | (Ott Rowlands) |
| 4. Fundraising Report (July 1, 2015 – June 30, 2016)                | (Gentry)       |
| 5. Organizational Changes Report                                    | (Hodges Moore) |
| 6. NKU/NKUF Partnership   | (Gentry)       |

**1:40 p.m.**

**C. Presidential Recommendations:**

1. \*Academic Affairs Personnel Actions
2. \*Non-Academic Personnel Actions
3. \*Major Gifts Acceptance
4. \*Naming Recommendations (Allen, Lorenz, Widmer, Hendon, Sidya, Turner, Cordray)
5. \*Faculty Emeritus Status Appointments (Bishop, Filaseta, Hastings, Pearce)
6. \*New Graduate Certificate Program – Emergency Management
7. \*Nurse Anesthesia Program Schedule of Tuition and Fees
8. \*Organizational Chart Update

**2:00 p.m.**

**D. Executive Session**

\*Consent Agenda Items - (Items placed on the consent agenda are passed in one motion without discussion. Any Regent may request that an item be removed from the consent agenda for a separate motion by calling Wendy Peek in the Office of the President, 572-5172, by 2 p.m., Tuesday, September 6, 2016).

**Board of Regents Meeting  
Northern Kentucky University, Student Union, Room 104  
April 27, 2016**

Regent Nathaniel Smith, Chair, called the regular meeting of the Board of Regents to order at 1:00 pm, Wednesday, April 27, 2016.

**Roll Call:** Richard Boehne, Richard L. Boyce, Virginia G. Fox, Katherine Hahnel, Terry Mann, Dennis Repenning, W. Lee Scheben, Arnie D. Slaughter, Nathaniel Smith, Elizabeth Thompson.  
Absent: Andr  Ward.

Other Attendees: Geoffrey S. Mearns, Kathryn Herschede, Wendy Peek, Sue Hodges Moore, Sue Ott Rowlands, Eric Gentry, Sara Sidebottom, Kathleen Roberts, Kim Turner, Kim Scranage, Lori Southwood, Mike Hales, Katherine Frank, Rebecca Porterfield, Cynthia Reed, Dale Scalise-Smith, Jeff Standen, Tracy Insko, Chris Bowling, Bill Farrow, Kathy Stewart, Sara Kelley, Larry Meyer, Melissa Gorbandt, Samantha Langley, Amanda Nageleisen, Mary Paula Schuh, Russ Kerdolff, Allen Cole, Pat Moynahan, Leah Stewart, Syed Zaidi, Janel Bloch, Amy Racke, Dawn Bell Gardiner, Matt Sexton, Leonard Ivy, Kathy Dewberry, Barb Barnes, Sarah Larcade, Dave Bauer, Tim Sofranko, Toni Wice, Steve Meier, Tiffany Budd, Katie Lovold, Kate Murphy

Regent Katherine Hahnel seconded Regent Elizabeth Thompson's motion to approve the minutes of the March 16, 2016 Board of Regents meeting. **(Motion carried)**

**Presidential Comments:**

As you know, as I mentioned a moment ago at lunch, we will celebrate three commencement ceremonies in two weeks. Our law school commencement on Friday evening, May 13 and our two university commencements on Saturday, May 14. More than 1,600 outstanding students will cross the stage and receive their diploma. You just heard about six of these remarkable students at the student awards luncheon. Now, let me tell you about how our recent graduates are doing.

**Our Graduates**

For the past four years, we have surveyed graduates approximately six months after their graduation. The results demonstrate the outstanding education students receive at NKU. Some of the findings include:

- Consistently from year-to-year, more than 90% of undergraduate alumni responding to the survey indicated that they are employed or are continuing their education.
- Approximately 81% of undergraduate alumni who responded that they were employed found jobs related, closely related, or somewhat related to their major in 2014-2015, an increase of three percentage points compared 2011-2012. Similarly, 91% of graduate alumni responded in 2014-2015 that they found jobs related to or somewhat related to their major, an increase of five percentage points over 2011-2012 responses.

- Finally, when asked where our alumni are obtaining their graduate degrees, the most common answer was NKU.

These results speak to our efforts to encourage students to take advantage of internships and co-ops, a focus on career development as early as a student's freshman year, and our growing reputation in the region.

### **Housing Demand**

I am pleased to report that we are experiencing unprecedented demand for on-campus housing. Our occupancy rate for this Spring is at the highest level in recent history – 94%, including a 96% occupancy rate in Northern Terrace, our newest residence hall. And we have 455 more completed applications for next Fall than we had at this time last year – and we only have 2,000 beds! We are developing plans to house all of our non-local students. However, some local students who do not complete the application by the priority deadline may not be able to live in the residence halls. This strong demand is an important consideration as we look to partner with a developer to build new housing and to renovate our existing housing.

### **Celebration of Student Research and Creativity**

Two weeks ago, we held our 14th Celebration of Student Research and Creativity. More than 640 students and 118 faculty mentors created posters, gave presentations, or displayed their art. The Celebration has become a signature event on our campus. It reinforces our commitment to student research activities and the strong relationships between students and their faculty mentors. I am grateful to Dr. Zach Hart and Dr. Christine Curran, the co-chairs of this year's Celebration. I also want to express my gratitude to the entire committee: Allen Ellis, Hayley Ericksen, Tyler Gabbard, Melanie Hartzel, Vanessa Hunn, Lisa Jameson, Boni Li, Gisele Loriot-Raymer, Kelly Moffett, KC Russell, Ryan Salzman, Melinda Spong, Andrea Watkins, and Kimberly Wiley. This event takes an effort from our entire campus community. Thank you to everyone who worked so hard to provide such an outstanding opportunity.

### **Campus Bikes**

For many years, our University has been a leader in sustainability efforts. From our building construction practices, to the retrofitting of our lights, to our partnership with TANK and Zip Cars, we have taken a leadership role in reducing our carbon footprint and encouraging sustainability. Last week, we added a new dimension to our sustainability program: a campus bike share. At several places on campus, you'll see racks housing brand new NKU bicycles. Students are able to borrow the bicycles for up to three hours free of charge. We are pleased that a bike share is now part of our ongoing sustainability efforts.

### **Sam Quinones**

Last week, we hosted Sam Quinones, the author of "Dreamland: The True Tale of America's Opiate Epidemic." Last Monday evening, Mr. Quinones spoke to a packed Greaves Hall audience of more than 650 students, faculty, staff, and community leaders. The next day,

Board of Regents  
April 27, 2016

Mr. Quinones led a Think Tank, spoke to journalism students, and participated in a series of community events. This was the first major public event associated with our Health Innovation Center. And it was a great success. I look forward to many more events associated with the HIC.

**Nathan Smith, Liz Thompson, and Katherine Hahnel**

This is the time in the academic year when we celebrate both the end and the beginning. We celebrate our students who are graduating and we look forward to welcoming current and new students back in a few months. We celebrate and thank those who are retiring. Today, we celebrate three Regents whose terms end on June 30<sup>th</sup>. Today marks the last regularly scheduled meeting for Regents Smith, Thompson, and Hahnel.

For the past year, Katherine Hahnel has served ably as our Student Government Association President and Regent. Regent Hahnel has been a staunch advocate for our students both here at our University and in Frankfort. Katherine, you have set the bar very high for all Student Government presidents. Thank you for your service to our University.

Regent Thompson has served our University as a Regent for six years, including service as the Vice Chair of the Board. Regent Thompson has been an outstanding supporter of our University and has dedicated her expertise to serve our students. Liz, many thanks.

Regent Smith ends his term on the Board, and also his term as Chair. Regent Smith has been a fixture on our campus since 1991 when he arrived as a freshman. Nathan bleeds black and gold, and I know that he will continue to be one of our biggest advocates and supporters.

Please join me in thanking Regents Hahnel, Thompson, and Smith for their dedicated service to our University.

**Sara Sidebottom**

While this isn't her last day, today marks the last official Board of Regents meeting for Sara Sidebottom. Sara has served our University for 20 years, 16 of which have been as our General Counsel. Despite often dealing with difficult issues, Sara always maintains a positive spirit and a sense of humor. I will miss her pride, her experience, and her good judgment. But I won't miss her far too frequent, unscheduled visits to my office at 5 p.m. on a Friday! Please join me in thanking and recognizing Sara Sidebottom.

**B. Presidential Reports:**

**1. Facilities Management Report (Senior Vice President Sue Hodges Moore)**

- a. Health Innovation Center/Founders Hall Renovation
- b. Health Innovation Center/Founders Hall Renovation (Chiller Installation)
- c. Science Center – Capital Renewal Investments
- d. Replace Campus Light Poles – Phase 1

- e. Regents Hall Repairs
- f. Sustainability
- g. North Connector Road
- h. Fine Arts Roof Repair

**2. Research, Grants, and Contracts Report (February 1, 2016 – March 30, 2016)** (Provost and Executive Vice President Sue Ott Rowlands)

During the February 1, 2016 through March 30, 2016 time period, 9 grants were awarded. The total amount of money awarded was \$1,025,494. From July 1, 2015 through January 31, 2016, the cumulative total number of grants awarded is 58 totaling \$5,298,586.

**3. Fundraising Report (July 1, 2015 through March 31, 2016)** (Vice President Eric Gentry)

The Fundraising Report summarized fundraising resources committed from July 1, 2015 through March 31, 2016 totaling \$12,222,424 in support of the university.

**4. Quarterly Financial Report (July 1, 2015 – March 31, 2016)** (Senior Vice President Sue Hodges Moore)

The Report was reviewed by the Board of Regents Audit Committee in accordance with Article III (D) (2) of the Board of Regents Bylaws.

**5. Organizational Changes Report** (Senior Vice President Sue Hodges Moore)

The organizational changes report reflected that the Steely Library's Learning Resource Collection has been renamed Teacher Resource Center.

**C. Presidential Recommendations:**

**Consent Agenda Items:** A motion was made by Regent Dennis Repenning and seconded by Regent Virginia Fox to approve the following Presidential Recommendations as listed; C-1 through C-17. **(Motion carried)**

**1. Academic Affairs Personnel Actions:**

**a. Administrative Appointments:**

**Ms. Jill Henry**, lecturer and executive director in the Center for Applied Informatics, effective March 14, 2016.

**b. Faculty Appointments:**

**Ms. Mary Kathryn Barton**, lecturer (non-tenure track renewable) in the School of the Arts, effective August 15, 2016; **Dr. Rebecca Elkins**, assistant professor in the Department of Kinesiology and Health, effective August 15, 2016; **Dr. Edmund Fenton, Jr.**, professor

(with tenure) in the Department of Accounting and Business Law, effective August 15, 2016; **Ms. Funda Gonulates**, assistant professor in the Department of Teacher Education, effective August 15, 2016; **Ms. Patricia Kappesser**, lecturer (non-tenure track renewable)/coordinator in the Department of Biological Sciences, effective August 15, 2016; **Dr. Katherina Nikzad-Terhune**, assistant professor in the Department of Counseling, Social Work and Leadership, effective August 15, 2016; **Mr. Wiley Piazza**, lecturer (non-tenure track renewable) in the Department of Kinesiology and Health, effective August 15, 2016; **Dr. Chari Ramkumar**, lecturer (non-tenure track renewable) in the Department of Physics, Geology and Engineering Technology, effective August 15, 2016; **Dr. Anthony K. Tsetse**, assistant professor in the Department of Computer Science, effective August 15, 2016.

**c. Retirements:**

**Professor Roger Billings**, professor in the Salmon P. Chase College of Law, effective May 17, 2016; **Dr. Cheryl Swayne**, associate professor in the Department of Advanced Nursing Studies, effective August 10, 2015.

**d. Departures:**

**Dr. Patricia Sunderhaus**, lecturer in the Department of Advanced Nursing Studies, effective May, 17, 2016; **Dr. Brett Zyromski**, associate professor in the Department of Counseling, Social Work and Leadership, effective May 11, 2016.

**2. Non-Academic Personnel Actions:**

The following categories of non-academic personnel actions which occurred between February 17, 2016 and March 29, 2016 received approval by the Board of Regents: Activations/Rehires; Reassignments, Reclassifications, Title/Status Changes, Promotions; Transfers; Contract/Temporary to Regular & Regular to Contract; Departures; Retirees; Administrative/Executive.

**3. Major Gifts Acceptance:**

The Board of Regents officially accepted contributions totaling **\$175,000** received by the NKU Foundation Inc. for the benefit of Northern Kentucky University during the period February 1, 2016 through March 31, 2016.

**4. Faculty Emeritus Status Appointment (Arrighi, Forman, England):**

The Board of Regents approved the Emeritus status for the following individuals.

**Dr. Barbara Arrighi**, professor in the Department of Sociology, Anthropology and Philosophy, effective May 15, 2016; **Ms. Sandra Forman**, professor in the School of the Arts, effective May 15, 2016; **Ms. Ana England**, professor in the School of the Arts, effective May 15, 2016.



**5. Faculty Handbook Addition (Clinical Faculty):**

The Board of Regents approved the Faculty Handbook addition regarding Clinical Faculty.

**6. Faculty Handbook Addition (Modified Duties):**

The Board of Regents approved the Faculty Handbook addition regarding Modified Duties.

**7. Faculty Handbook Addition (Professors in Practice):**

The Board of Regents approved the Faculty Handbook addition regarding Professors in Practice.

**8. Faculty Handbook Addition (PT Tenure Track Appointments):**

The Board of Regents approved the Faculty Handbook addition regarding PT Tenure Track Appointments.

**9. Faculty Handbook Change (Extension of Probation):**

The Board of Regents approved the Faculty Handbook change regarding Extension of Probation.

**10. Faculty Handbook Change (New RPT Language):**

The Board of Regents approved the Faculty Handbook change regarding New RPT Language.

**11. Chair Handbook Change (Leave for Chairs):**

The Board of Regents approved the Chair Handbook change regarding Leave for Chairs.

**12. Chair Handbook Change (Promotion and Tenure):**

The Board of Regents approved the Chair Handbook change regarding Promotion and Tenure.

**13. Chair Handbook Change (Workload):**

The Board of Regents approved the Chair Handbook change regarding Workload.

**14. Honorary Doctor of Laws Degree (Gleeson):**

The Board of Regents approved that the Honorable John Gleeson receive an Honorary Doctor of Laws Degree.

**15. Connector Road Water Easement:**

The Board of Regents granted an easement to the Northern Kentucky Water District for construction of a water line in the area between Campbell Hall and the new Connector Road.

**16. Staff Emeritus Recommendation:**

The Board of Regents approved the recommendation from Staff Congress to create a Staff Emeritus appointment.

**17. Posthumous Degree (Marksberry):**

The Board of Regents approved that Hope Marksberry receive a posthumous Bachelor of Arts in Integrative Studies.

**18. FY 2016-2017 Tuition and Mandatory Fee Rates:**

**19. FY 2016-2017 Schedule of Fees and Service Charges:**

Regent Richard Boehne seconded Regent Terry Mann's motion to accept all the recommendations related to tuition and mandatory fees, and 2016-2017 fee and service charges, with the exception of the following: undergraduate tuition increase at 3%, housing increase at 3% (net), parking increase at 3%.

The Chair called for a roll call vote. Richard Boehne-Yes, Richard Boyce-No, Virginia Fox-Yes, Katherine Hahnel-Yes, Terry Mann-Yes, Dennis Repenning-No, Lee Scheben-Yes, Arnie Slaughter-Yes, Nathaniel Smith-Yes, Elizabeth Thompson-Yes, Andr  Ward – Absent  
**(Motion carried)**

**20. Values and Ethical Responsibilities Statement:**

Regent Richard Boehne seconded Regent Virginia Fox's motion to accept the Values and Ethical Responsibilities Statement with the following changes:

- (1) Strike the last paragraph under the section heading "Preserve Academic Freedom and Meet Academic Responsibilities;
- (2) Evaluate possible revisions to this policy, including issues and consistency of statements related to freedom of speech and academic freedom; and,
- (3) Direct the administration to work with the Faculty Senate, Staff Congress, and Student Government Association to develop a revised "Policy Creation, Revision, and Communication" policy to recognize the role of the Faculty Senate, Staff Congress, and when appropriate, the Student Government Association.

The Chair called for a roll call vote. Richard Boehne-Yes, Richard Boyce-No, Virginia Fox-Yes, Katherine Hahnel-Yes, Terry Mann-Yes, Dennis Repenning-Yes, Lee Scheben-Yes,

Board of Regents  
April 27, 2016

Arnie Slaughter-Yes, Nathaniel Smith-Yes, Elizabeth Thompson-Yes, Andrá Ward – Absent  
(**Motion carried**)

**D. Board Recommendation:**

A motion was made by Regent Terry Mann and seconded by Regent Katherine Hahnel to approve the following Board of Regents officers for 2016-2017: Chair, Regent Richard Boehne; Vice Chair, Regent Lee Scheben; Secretary, Regent Virginia Fox. (**Motion carried**)

**E. Executive Session:**

Regent Richard Boyce seconded Regent Nathaniel Smith's motion to enter into executive session pursuant to KRS 61.810(1) (C) and KRS 61.810(1) (F). (**Motion carried**)

No other matters were discussed. No final action was taken.

At 3:40 p.m., Regent Richard Boyce seconded Regent Terry Mann's motion to adjourn. (**Motion carried**)

Signature On File  
Wendy J. Peek  
Senior Administrative Assistant  
Office of the President

Signature On File  
Kathryn J. Herschede  
Executive Assistant to the President/  
Secretary to the Board of Regents

I, Virginia Fox, Secretary of the Board of Regents of Northern Kentucky University, certify that the foregoing is a true copy of the minutes of the regular meeting held on April 27, 2016, and that such matters are still in force and effect.

Signature On File  
Virginia G. Fox  
Secretary of the Board of Regents

**Board of Regents Meeting  
Northern Kentucky University, Student Union, Room 104  
May 18, 2016**

Regent Nathaniel Smith, Chair, called the special meeting of the Board of Regents to order at 3:00 pm, Wednesday, May 18, 2016.

**Roll Call:** Richard Boehne, Richard L. Boyce, Virginia G. Fox, Katherine Hahnel, Terry Mann, Dennis Repenning, W. Lee Scheben, Arnie D. Slaughter, Nathaniel Smith, Elizabeth Thompson, André Ward. Absent: W. Lee Scheben.

Other Attendees: Geoffrey S. Mearns, Kathryn Herschede, Wendy Peek, Sue Hodges Moore, Sue Ott Rowlands, Eric Gentry, Kathleen Roberts, Kim Turner, Ken Bothof, Kim Scranage, Lori Southwood, Mike Hales, Rebecca Porterfield, Cynthia Reed, Dale Scalise-Smith, Kevin Kirby, Jeff Standen, Arne Almquist, Ken Jones, Tracy Insko, Chris Bowling, Bill Farrow, Josh Schmidt, Kathy Stewart, Sara Kelley, Samantha Langley, Amanda Nageleisen, Joel Robinson, Russ Kerdolff, Allen Cole, Adam Caswell, Pat Moynahan, Leah Stewart, Janel Bloch, Amy Racke, Dawn Bell Gardiner, Cathy Dewberry, Steve Meier, Tiffany Budd, Kate Murphy, Bob Driehaus, Ron Fischer, Judy Voelker, Brandon Thomas, Sara Conwell, Kristi Haik, Keith Walters, Justin Duncan, Kim McCoy, Natalie Nickol, Kelly Martin, Karen Mefford, Dannie Moore, Beth Sweeney, Gail Mackin, Alar Lipping, Carole Ziegler, Eileen Baker, Jane Bratton, Francois LeRoy, Samba Dieng, Kim Graboskey, Marilyn Taylor, Lisa Brinkman, Brandon Billiter, Jim Woll, Kyle Jacobson, Lauren Franzen, Emily Sumner, Lori Thaxton, Camryn Whitaker, Ryan Padgett, Jeanne Pettit, Vickie Natale, Jeanne Papania, Mary Beth Ward, Vicki Cooper, Rachel Green, Ann James, Victoria Suttmiller, Clare Mearns, Bridget Mearns, Tina Altenhofen, Sue Murphy, Mark Wasicsko, Randy Little, Ben Martz, Kristen Lovett, Collette Thompson, Tracy Brate, Kim Sanders, Charita Brewer, Kenneth Katkin, Amanda Peters, Lori Wright.

**A. Presidential Recommendations:**

**1. FY 2016-2017 Budget Approval:**

Regent Richard Boehne seconded Regent Terry Mann's motion to approve the FY 2016-2017 Budget. **(Motion carried)**

The Board of Regents approved the resolution establishing and approving the Fiscal Year 2016-17 Annual Unrestricted Operating Budget for Northern Kentucky University.

**2. Values and Ethical Responsibilities Statement:**

Regent Richard Boehne seconded Regent Virginia Fox's motion to approve the Values and Ethical Responsibilities Statement. **(Motion carried)**

The Board of Regents approved the proposed addendum to the Values and Ethical Responsibilities Statement.

Board of Regents  
May 18, 2016

**E. Executive Session:**

Regent Andrá Ward seconded Regent Nathaniel Smith's motion to enter into executive session pursuant to KRS 61.810(1) (C) and KRS 61.810(1) (F). **(Motion carried)**

No other matters were discussed. No final action was taken.

At 4:40 p.m., Regent Katherine Hahnel seconded Regent Terry Mann's motion to adjourn. **(Motion carried)**

*Signature On File*  
**Wendy J. Peek**  
**Senior Administrative Assistant**  
**Office of the President**

*Signature On File*  
**Kathryn J. Herschede**  
**Executive Assistant to the President/**  
**Secretary to the Board of Regents**

I, Virginia Fox, Secretary of the Board of Regents of Northern Kentucky University, certify that the foregoing is a true copy of the minutes of the regular meeting held on May 18, 2016, and that such matters are still in force and effect.

*Signature On File*  
**Virginia G. Fox**  
**Secretary of the Board of Regents**

**Board of Regents Retreat  
Northern Kentucky University  
Scripps Center, Cincinnati, Ohio  
July 20, 2016**

Regent Richard Boehne, Chair, called the Board of Regents Retreat to order at 1:00 pm, Wednesday, July 20, 2016.

**Roll Call:** Richard A. Boehne, Richard L. Boyce, Virginia G. Fox, Terry L. Mann, Dennis Repenning, W. Lee Scheben, Arnie D. Slaughter, Nathaniel G. Smith, Andr  Ward, John William Weber.

**Other Attendees:** Geoffrey Mearns, Katie Herschede

**Oath of Office:**

Regent Richard Boehne performed the oath of office for the newly elected Regent: John William Weber. The newly elected Regent swore to uphold all stipulations of the oath and faithfully execute, to the best of his ability, the duties of Regent of Northern Kentucky University according to law.

**Board Self-Assessment:**

Regent Richard Boehne led the Board in its annual self-assessment.

**Board Focus for 2016-2017:**

The Board identified several areas of focus for the coming year including:

- Enrollment and Retention
- Budget
- Cutting Edge Teaching and Learning Strategies
- Inclusive Excellence

**Review of 2015-2016 & Goals for 2016-2017:**

President Mearns reviewed activities and achievements related to strategic plan implementation, the health innovation center, a state funding model, marketing and communications, development, and athletics.

**Presidential Compensation:**

The Board unanimously approved Regent Richard Boehne's recommendation to direct President Mearns' annual \$25,000 bonus to the Mearns/Proud Scholarship Fund in the Northern Kentucky University Foundation as requested by President Mearns. **(Motion carried)**

At 4:15 p.m., Regent André R. Ward seconded Regent John William Weber's motion to adjourn. **(Motion carried)**

*Signature On File*

**Kathryn J. Herschede**  
**Executive Assistant to the President/  
Secretary to the Board of Regents**

I, Virginia G. Fox, Secretary of the Board of Regents of Northern Kentucky University, certify that the foregoing is a true copy of the minutes of the retreat held on July 20, 2016, and that such matters are still in force and effect.

*Signature On File*

**Virginia G. Fox**  
**Secretary of the Board of Regents**

## **FACILITIES MANAGEMENT REPORT**

### **1. Health Innovation Center/Founders Hall Renovation**

The 2014 General Assembly provided \$97 million in state bond funding for design and construction of the Health Innovation Center project which includes the full renovation of Founders Hall. A gift of \$8 million from St. Elizabeth Healthcare has increased available project funds to \$105,000,000.

The Health Innovation Center will be a comprehensive health science education and applied research facility located in the core of NKU's campus. The project will position the university to be a leader in this field, to enroll and graduate professionals trained for the changing face of health education and wellness. To meet these goals, the university's approach is collaborative and interdisciplinary, involving numerous academic disciplines, including those in health, social science, information science, and the physical and life sciences.

Upon completion, the building will be light-filled, open and inviting. It will feature active learning classrooms as well as spaces designed to advance nursing and health science education, including a clinical suite; medical simulation suite; nursing, radiology and respiratory skills labs; a biopsychology and a neuroscience lab; advanced kinesiology lab; movement studio; innovation studios; offices; and a café and spaces designed to build community. The building features a dramatic split-level public space which connects the Central Plaza with the West Quad. The new building has been planned as a pair of wings or lofts oriented along the east-west direction to optimize solar orientation. The lofts are positioned directly adjacent to Founders Hall, creating multiple collaborative common areas. They are connected via bridges to Founders Hall across a narrow four story atrium space, joining the new construction with the existing building. A large skylight at the roof level will allow natural daylight to spill down through the atrium space.

**Construction Progress:** The foundation work has been completed and the steel superstructure has begun. The steel structure will be essentially complete by the first week of September. Approximately 40% of the first floor concrete floor has been poured.

**Founders Hall:** Interior demolition of Founders Hall is complete. New windows will be installed this month. Renovation of Founders Halls is scheduled to begin in September.

Approximately 75% of the project has been bid. The entire project will be bid out by October. Construction was 15% complete as of July 31, 2016.

The project is currently on schedule and within budget.

Architect: CO Architects/GBBN

Engineers: CMTA, THP, Kleingers & Associates

Special Consultants: Sextant Group, Capital Projects Group, Vivian Llambi, SM&W



## **Health Innovation Center/Founders Hall Renovation – Continued**

Construction Manager: Turner Construction

Scope: \$105,000,000

Anticipated Completion: Spring 2018



Aerial Photo of Construction Site - 1



Aerial Photo of Construction Site - 2

## **2. Callahan Hall Loading Dock Replacement**

The Callahan Hall Loading Dock Replacement project includes work to replace the deteriorated exterior dock; replace the deteriorated driveway leading to the dock area; relocate the dumpster and add a trash compactor; install new lighting; and introduce landscape screening in and around the dock area. The project also addresses egress safety concerns in the dock area, resulting in increased resident safety. This project is scheduled to be complete prior to residence hall move-in on August 18th.

### **Callahan Hall Loading Dock Replacement – Continued**

Project is on schedule and budget.

Engineers: GBBN, Schaeffer and Kleingers

Contractor: Empire Construction

Scope: \$275,000



Photo Looking at the Dock

### **3. Student Account Services and Vestibule Renovation**

The Student Account Services office is being renovated to improve customer service and create a more modern and inviting experience for students, parents and staff. Reconfiguration of the Lucas Administrative Center 2<sup>nd</sup> floor entry vestibule was included in the scope of work. The design intent for both spaces is to create a more contiguous feel with the recent Administrative Center 3<sup>rd</sup> floor entrance and University Center 1<sup>st</sup> floor entrance renovations.

Architect: Studio Ives

Engineers: CMTA

Contractor: Perkins Carmack Construction LLC

Scope: \$241,000

Anticipated Completion: August 2016



Before



After

#### **4. Women's Volleyball Locker Room Renovation**

The Women's Volleyball Locker Room, located in Regents Hall, is being renovated to create a more inviting and private space for team members. The scope of work includes upgrading the shower and restroom area for ADA accessibility.

Architect: K4 Architecture LLC

Engineers: Marque

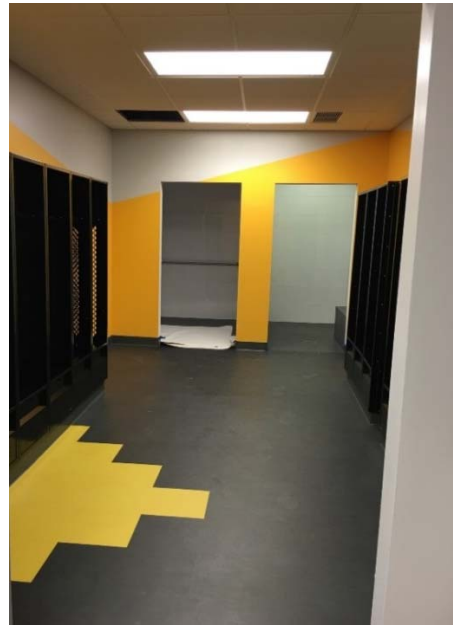
Contractor: Bluegrass Commercial

Scope: \$93,121

Anticipated Completion: August 2016



Shower after Renovation



Locker Area after Renovation

#### **5. Replace Campus Light Poles - Phase 1**

This is Phase I of an estimated three year replacement program to replace the 125 roadway light poles on campus. These steel light poles have reached/exceeded their life expectancy. Many are rusting internally at the base and need to be replaced to minimize safety risks. In addition, the project will reduce operating costs through use of long-lasting LED lights that use less energy and reduce maintenance.

In August 2016, 25 pole bases will be installed along Nunn Drive between US 27 and the roundabout intersection with University Drive. The poles, with the light fixtures, are scheduled to be installed in September and October. Project scope may be increased using a portion of FY17 Phase II funds for an additional 15 poles along Nunn Drive from the roundabout to Stealy Library.

Structural Engineer: THP Limited Inc.

Contractor: Atkins & Stang Inc.



## **Replace Campus Light Poles - Phase 1 – Continued**

Scope: \$165,000

Anticipated Completion: Phase I – October 2016



Current Condition of some Campus Street Light Poles

## **6. Regents Hall Repairs**

Repairs to Regents Hall will be made in the following areas:

- A. The north side of the Albright Health Center between the new Campus Recreation Center and Regents Hall will be cleaned, caulked, and sealed.
- B. The stress crack extending from the floor to the roof in the south, exterior wall of Regents Hall will be repaired.
- C. Structural repairs will be made to the bridge connecting Regents Hall and the Student Union.

Work to clean, caulk, and seal the north side of the Health Center between the Campus Recreation Center portion of the building and Regents should be finished in August. Work to repair the stress crack in the building's south wall and structural repairs to the Regents entry bridge will begin in September and take about eight weeks.

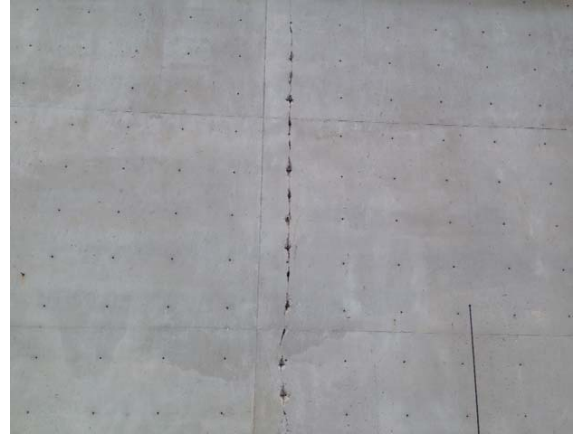
Structural Engineers: THP Limited Inc.

Contractor: ZSR Contracting & Restoration

Scope: \$152,600

Anticipated Completion: November 2016

## **Regents Hall Repairs – Continued**



Current Condition of the Regents Hall/Student Union Bridge and the Stress Crack in the South Wall of Regents Hall

### **7. Power/Central Plant Roof**

The section of Power Plant roof under the cooling towers was leaking through the base material into the insulation. The primary source of the leaks was determined to be years of chemically infused cooling tower water draining onto the roof. This project repaired the leaks and replaced the damaged insulation. Mats were installed under the cooling towers to protect the surface of the roof and direct the water to drains. The repairs are warranted for ten years.

Contractor: Weatherproofing Technologies Inc.

Scope: \$130,000

Anticipated Completion: Completed in June 2016



Previous Condition of the Roof



Finished Roof with Walk Mats in Place

## **8. High Voltage Loop Switch**

The electrical service to the main campus is delivered through two independent ‘feeds’ that power two campus service ‘loops’. This feature, combined with a series of switches across campus, enables individual buildings or several buildings to be taken off-line and also allows for power to be transferred from one loop to the other. This intentional system redundancy significantly reduces the risk of prolonged power disruption. Periodically, the equipment servicing each loop needs to be inspected and maintained.

In December 2015, as part of a five year plan to inspect sections of the loops, the first inspection was completed. The inspection found that a high voltage ‘pad mount’ loop switch in the north turf area of the Science Center, approximately 40 years old, has reached the end of its life. This switch provides power to part of our exterior lighting and provides the flexibility to cut power to half the main campus buildings. Moisture is getting into the switch, corroding the contacts and causing electrical arcs. It was highly recommended that the switch be replaced soon.

This project will replace the switch, minimizing the risk of a power outage. The custom switch has been ordered and is tentatively scheduled to be installed in September 2016.

Electrical Engineer: KZF Design Inc.

Contractor: Banta Electrical Contractors Inc.

Scope: \$60,000

Anticipated Completion: October 2016



Current ‘Pad Mount’ Loop Switch

## **9. Lucas Administrative Center Sealing and Caulking**

This project includes washing and sealing the concrete and caulking the window seals and building control joints on the exterior of the Administrative Center’s west side. The other sides of the building were previously treated and caulked. Five offices located on the west side of the building have leaks from failed window seals and caulk joints.

In a related project, the exterior of all windows in the building will be cleaned to remove the stains.

Contractor: ZSR Contracting & Restoration.

Scope: \$85,000

Anticipated Completion: Completed in July 2016

## **Lucas Administrative Center Sealing and Caulking – Continued**



This picture demonstrates the effect of ‘sealing’ (left side) the concrete to reduce moisture penetration into the building.

### **10. Education at Work**

The University has entered into a lease agreement with Education at Work (EAW) to provide workforce development opportunities to eligible University students through the Education at Work on campus partnership program. Training and work opportunities will be provided for students, and employed students will have the opportunity to earn tuition dollars. EAW will be located in an area of about 4,400 square feet in Incubator Building #1, located behind Campbell Hall. With the assistance of Operations & Maintenance, this space has been converted to a work space/call center, the Education at Work Center.

Contractor: NKU Operations & Maintenance staff with some contractor support

Scope: \$150,000

Anticipated Completion: August 2016

### **11. Parking Lot Restoration**

This summer, parking lots T, I, Q, Regents Hall, and the Maintenance Building were repaired and resurfaced with a two inch overlay. A bio-retention swale was installed near Lot I.

Consultant: Site Solutions Consulting

Contractor: Paul Michels & Sons Inc.

Scope: \$445,000



## **Parking Lot Restoration – Continued**

Anticipated Completion: August 2016 – Parking lots  
November 2016 – Bioswale



## **12. Sustainability**

NKU Sustainability is preparing to begin the process of drafting the University's first Sustainability Strategy. This document will address NKU's goal of achieving carbon neutrality by the year 2050 by identifying priorities and setting tangible goals. Drafting this document will be a collaborative effort among a diverse group of stakeholders from across the institution. All students, faculty, and staff will have the opportunity to provide input for the document by submitting feedback online or participating in person at a public forum. The document is scheduled to be published during Earth Week 2017.



## **Sustainability – Continued**

Earth Week 2016 was celebrated on campus from April 18-22. Celebrations included the launch of the free bike share program, the community garden grand opening, and a student-led discussion about food waste recycling. Upcoming sustainability initiatives include the biannual Office Supply Swap event aimed at reducing waste generated by unused office supplies and a “thrift shop” to help students recycle old clothing and household items.

NKU Sustainability has partnered with First Year Programs and New Student Orientation to help introduce incoming students to sustainability at the University. The 2016 common summer reading book selection was *Where am I Eating? An Adventure Through the Global Food Economy* by Kelsey Timmerman. The Sustainability Manager has met incoming students and led them through a hands-on activity intended to help educate students about the long distances common foods must travel to reach NKU.



### **13. North Connector Road**

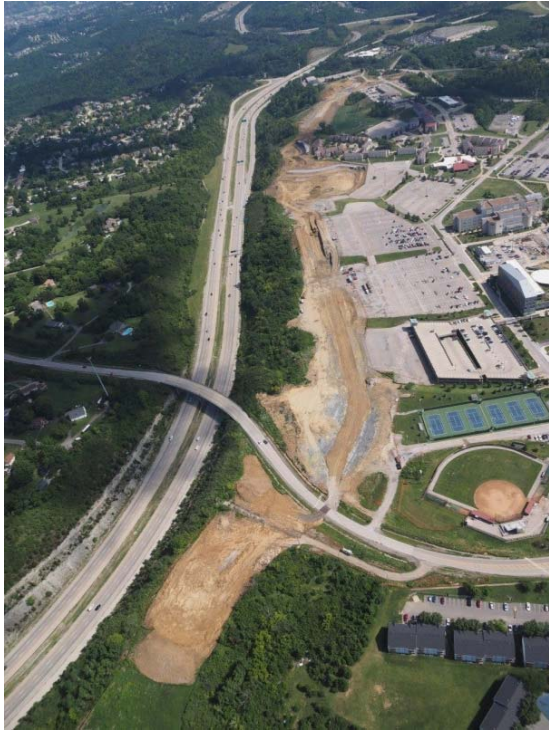
The Kentucky Transportation Cabinet has awarded this long-awaited federally funded project to Bray Construction. The \$10.6 million project is well underway. Earth work is well underway, and the road alignment and elevation is beginning to become apparent. As part of the project, about 75,000 cubic yards of fill is being placed in a deep valley west of Parking Lot M, creating a land bridge for the road. Construction is expected to be complete in fall 2017.

The one-mile long road begins at a roundabout intersection at Three Mile Road, climbs the hill and crosses between the Maintenance Building and Campbell Hall as it runs along the west side of the new intramural fields, west of Woodcrest and through the western gravel section of parking lots L, K, A and G; ending at a new roundabout at Johns Hill Road. The road includes a sidewalk and bike lanes. A second section of the Connector Road, the south section, will be bid later and will extend over a mile south of Johns Hill Road, connecting with Pooles Creek Road, near its intersection with AA Highway.

This road was a high priority of both the 2000 and 2009 Master Plans and upon completion, will resolve traffic congestion in the core area of campus.

### North Connector Road - Continued

The University has a project in the early planning stages to redesign the parking lots along the west side of campus, between the new Connector Road and Kenton Drive. The project will include lighting and landscaping.



North Connector Road Photo, July 2016



### North Connector Road Satellite Image



April & July 2016 (before and after) – View Toward I-275 of Large Fill Area West of Parking Lot M

**OFFICE OF RESEARCH, GRANTS, AND CONTRACTS REPORT**

The attached report lists the grants awarded, with the amount awarded for each grant, for NKU faculty and staff for April 1, 2016 through June 30, 2016, and Fiscal Year 2015-16:

- During the April 1, 2016 – June 30, 2016 time period, **31** grants were awarded. The total amount of money awarded was **\$1,809,181**.
- For Fiscal Year 2015-16, the cumulative total number of grants awarded is **89** totaling **\$7,107,768**.

**NKU Office of Research, Grants and Contracts**  
**Grants Awarded Funding - April 1, 2016 thru June 30, 2016**  
**FY 2015-16**

<u>Category</u>	<u>Type</u>	<u>College/Administrative Office</u>	<u>Project Title</u>	<u>Sponsor</u>	<u>Sponsor Total</u>
		<u>Department</u>			
		<i>Academic Affairs</i>			
Student Support	New-Competitive	Undergraduate Academic Affairs	SB1- NKU Corequisite Math	Council on Postsecondary Education	<b>\$17,500</b>
		<i>College of Arts and Sciences</i>			
Instruction	Continuation	Mathematics & Statistics	Project FLIP: Using Video Podcasts for Mathematics Instruction and Intervention	Council on Postsecondary Education	<b>\$112,000</b>
Instruction	New-Competitive	Mathematics & Statistics	Supporting Strategies for Building Numeracy in Grades K-3	Murray State University	<b>\$15,061</b>
Public Service	Continuation	Physics and Geology	Advantage Kentucky Alliance Yr. 4	Western KY University	<b>\$182,417</b>
Public Service	New-Competitive	Visual Arts	Photographic Survey of the American Yard	Photo Focus	<b>\$5,000</b>
Public Service	Continuation	Political Science & Criminal Justice	Future Leaders Internship Program (FLIP)	Murray & Agnes Seasongood Foundation	<b>\$12,500</b>
Research	Continuation	Biological Sciences	KBRIN : The Role of FGF Signaling in Pharynx Development Yr. 2	University of Louisville Research Foundation	<b>\$53,000</b>
Research	Continuation	Chemistry	KBRIN: Advancing in Vivo Thyroid Hormone Measurement Technology Yr. 2	University of Louisville Research Foundation	<b>\$53,000</b>

<u>Category</u>	<u>Type</u>	<u>College/Administrative Office</u> <u>Department</u>	<u>Project Title</u>	<u>Sponsor</u>	<u>Sponsor Total</u>
<i>Academic Affairs</i>					
Student Support	New-Competitive	Undergraduate Academic Affairs	SB1- NKU Corequisite Math	Council on Postsecondary Education	<b>\$17,500</b>
Research	Continuation	Psychological Science	KBRIN : Contribution of NMDA NR2B Subunit to Impulsive Choice and Amphetamine Reward Yr. 2	University of Louisville Research Foundation	<b>\$52,291</b>
Research	New- Competitive	Biological Sciences	Assessing the Effects of Amus Honeysuckle Control on Native Plant Communities at Woodland Mound Park 11 Years after Removal	Hamilton County Park District	<b>\$1,312</b>
Research	New-Competitive	Biological Sciences	KBRIN : Post Doc Fellow Award	University of Louisville Research Foundation	<b>\$33,125</b>
Research	New-Competitive	Chemistry	Synthesis of Naturally Occurring Diarylheptanoid Analogues and their Potential Anti-inflammatory Activity	Kentucky Academy of Science	<b>\$3,000</b>
Research	New-Competitive	Chemistry	KBRIN: Identification of Novel tRNA Modification Genes in Human and Animal Cells Yr. 1	University of Louisville Research Foundation	<b>\$53,000</b>
Research	New-Competitive	Psychological Science	KBRIN - Lead Faculty Award	University of Louisville Research Foundation	<b>\$17,775</b>
Research	New-Competitive	Psychological Science	KBRIN - Post Bacc. Research Associate Award	University of Louisville Research Foundation	<b>\$33,125</b>

<u>Category</u>	<u>Type</u>	<u>College/Administrative Office</u> <u>Department</u>	<u>Project Title</u>	<u>Sponsor</u>	<u>Sponsor Total</u>
<i>Academic Affairs</i>					
Student Support	New-Competitive	Undergraduate Academic Affairs	SB1- NKU Corequisite Math	Council on Postsecondary Education	<b>\$17,500</b>
Research	New-Competitive	Psychological Science	KBRIN : Acute Effects of Alcohol and Energy Drinks on Behavioral Control-Research Tech	University of Louisville Research Foundation	<b>\$33,125</b>
Student Financial Support	Fellowship	Biological Sciences	EPA Fellowship - Sarah Stryffler	U.S. Environmental Protection Agency	<b>\$27,000</b>
Student Financial Support	Fellowship	Biological Sciences	2016 Bacteria Sampling of A.J. Jolly Lake Beach Area	Campbell County	<b>\$1,477</b>
<i>College of Education and Human Services</i>					
Instruction	Continuation	Teacher Education	Kentucky Reading Project Alumni Cadre	University of Kentucky	<b>\$58,000</b>
Instruction	Continuation	Teacher Education	Kentucky Leveraged Adolescent Literacy and Learning Initiative 2016-17	Collaborative Center for Literacy Development	<b>\$28,151</b>
Instruction	Continuation	Teacher Education	Kentucky Traineeship in Special Education FY 17	U.S. Dept. of Education/KY State Dept. of Education	<b>\$740,000</b>
Instruction	Continuation	Teacher Education	KTIP Training & Oversight FY 17	Education Professional Standards Board	<b>\$73,114</b>
<i>College of Health Professions</i>					
Public Service	Continuation	Nursing	Horsemen's Wellness Center FY 15-16	Kentucky Racing Health & Welfare Fund	<b>\$5,278</b>

<u>Category</u>	<u>Type</u>	<u>College/Administrative Office</u> <u>Department</u>	<u>Project Title</u>	<u>Sponsor</u>	<u>Sponsor Total</u>
<i>Academic Affairs</i>					
Student Support	New-Competitive	Undergraduate Academic Affairs	SB1- NKU Corequisite Math	Council on Postsecondary Education	<b>\$17,500</b>
Public Service	New-Competitive	Nursing	City Heights Health Center at Ida Spence Mission: A Community Governing its Health Destiny	Good Samaritan Foundation	<b>\$2,510</b>
<i>Haile/US Bank College of Business</i>					
Student Support	New-Competitive	Entrepreneurship Institute	Idea State University	Kentucky Science and Technology Corporation	<b>\$1,500</b>
<i>College of Informatics</i>					
Public Service Research	New-Non Competitive	Communication	Batesville Human Resources Video	Batesville Services	<b>\$4,950</b>
	New-Competitive	Computer Science	Prioritizing Natural Areas for	Hamilton County Park	<b>\$5,250</b>
<i>Office of Vice Provost for Graduate Education, Research &amp; Outreach</i>					
Public Service	Continuation	Kentucky Campus Compact	Kentucky College Coaches FY 15-16 Additional Funds	Corporation for National and Community Service	<b>\$35,073</b>
<i>Student Affairs</i>					
Public Service	New- Competitive	Intercollegiate Athletics	Warrior Run	Warrior Run	<b>\$5,000</b>
Public Service	New-Competitive	Educational Talent Search	NKU Educational Talent Search	Greater Cincinnati Foundation	<b>\$1,000</b>



<u>Category</u>	<u>Type</u>	<u>College/Administrative Office</u>	<u>Project Title</u>	<u>Sponsor</u>	<u>Sponsor Total</u>
		<u>Department</u>			
Academic Affairs					
Student Support	New-Competitive	Undergraduate Academic Affairs	SB1- NKU Corequisite Math	Council on Postsecondary Education	\$17,500
Student Support Services					
Public Service	Continuation	Student Achievement Center	(KTAP) Kentucky Transitional Assistance Program - Post Secondary Education Program FY 17	Cabinet of Health and Family Services	\$143,647
Total Number of Awards April 1, 2016 - June 30, 2016		<u>31</u>	Total Funds Awarded April 1, 2016 - June 30, 2016		<u>\$1,809,181</u>
Total Number of Awards July 1, 2015 - June 30, 2016		<u>89</u>	Total Funds Awarded July 1, 2015 - June 30, 2016		<u>\$7,107,768</u>



**OFFICE OF RESEARCH, GRANTS, AND CONTRACTS REPORT**

The attached report lists the grants awarded, with the amount awarded for each grant, for NKU faculty and staff for July 1, 2016 through July 31, 2016, Fiscal Year 2016-17:

- During the July 2016 time period, **16** grants were awarded. The total amount of money awarded was **\$1,054,645.**

**NKU Office of Research, Grants and Contracts**  
**Grants Awarded Funding - July 1, 2016 thru July 31, 2016**  
**FY 2016-17**

<u>Category</u>	<u>Type</u>	<u>College/Administrative Office</u> <u>Department</u>	<u>Project Title</u>	<u>Sponsor</u>	<u>Sponsor Total</u>
<i>Administration and Finance</i>					
Public Service	New-Competitive	Department of Public Safety	Northern Kentucky University Police Body Armor Project	Kentucky Office of Homeland Security	<b>\$5,985</b>
<i>College of Arts and Sciences</i>					
Instruction	New-Competitive	Kentucky Center for Mathematics	KCM 5 Comprehensive Course for Middle Grades	Kentucky Department of Education	<b>\$41,568</b>
Instruction	New-Competitive	Kentucky Center for Mathematics	KCM 6 Comprehensive Course for Primary Grades	Kentucky Department of Education	<b>\$41,568</b>
Instruction	New-Competitive	Kentucky Center for Mathematics	KCM 1 Algebra Lesson Study	Kentucky Department of Education	<b>\$7,776</b>
Instruction	New-Competitive	Kentucky Center for Mathematics	KCM 2 Master Coach Program	Kentucky Department of Education	<b>\$47,656</b>
Instruction	New-Competitive	Kentucky Center for Mathematics	KCM 4 Foundations for Middle School	Kentucky Department of Education	<b>\$152,246</b>
Instruction	New-Competitive	Kentucky Center for Mathematics	KCM 3 Content Coaching	Kentucky Department of Education	<b>\$64,752</b>
Instruction	New-Competitive	Kentucky Center for Mathematics	KCM 7 Foundations for Primary Grades	Kentucky Department of Education	<b>\$79,783</b>
Instruction	New-Competitive	Kentucky Center for Mathematics	KCM 8 Foundations for Early Childhood	Kentucky Department of Education	<b>\$57,897</b>
Research	New-Competitive	Biological Sciences	Improvements in Facilities, Communication and Equipment at Biological Field Stations & Marine Laboratories - Planning Grants	National Science Foundation	<b>\$25,000</b>
<i>College of Education and Human Services</i>					
Instruction	Continuation	Counseling, Social Work, and Leadership	SBIRT Health Professions Student Training Project Yr. 2	Substance Abuse & Mental Health Services Administration	<b>\$306,121</b>
Public Service	Continuation	Counseling, Social Work, and Leadership	Public Child Welfare Certification Program FY 17	Eastern Kentucky University/FFT	<b>\$12,129</b>

<u>Category</u>	<u>Type</u>	<u>College/Administrative Office</u>	<u>Project Title</u>	<u>Sponsor</u>	<u>Sponsor Total</u>
		<u>Department</u>			
Public Service	Continuation	Counseling, Social Work, and Leadership	University Training Consortium FY 17	Eastern Kentucky University/FFT	<b>\$106,707</b>
		<i>College of Health Professions</i>			
Public Service	New-Competitive	Nursing	Brighton Health Initiative	Brighton Center, Inc	<b>\$56,457</b>
		<i>Office of Vice Provost for Graduate Education, Research &amp; Outreach</i>			
Public Service	New-Competitive	Kentucky Campus Compact	TASK VISTA	Corporation for National and Community Service	<b>\$28,000</b>
Public Service	New-Competitive	Scripps Howard Center for Civic Engagement	Mayerson Student Philanthropy Project FY 17	Manuel D. and Rhoda Mayerson Foundation	<b>\$21,000</b>

**Total Number of Awards from  
July 1, 2016 thru July 31, 2016**

**16**

**Total Funds Awarded from  
July 1, 2016 thru July 31, 2016**

**\$1,054,645**

## **FUNDRAISING REPORT**

The attached Fundraising Report **summarizes fundraising resources committed from July 1, 2015 through June 30, 2016 totaling \$13,176,425** in support of the university.

The report includes:

1. Resources in support of the colleges, Steely Library, Go Norse Fund, NKU Fund For Excellence, Academic Affairs & University Designated Initiatives, Student Affairs, University Wide Student Aid, and WNKU.
2. Resources for Fiscal Year 2016.

### **Fundraising Resources FY 16 to Date by Designation For the Period 7/01/15- 6/30/16**

<b>Designation</b>	<b>FY16</b>
College of Arts and Sciences	\$ 1,077,051
College of Business	\$ 149,470
College of Education & Human Services	\$ 91,308
College of Health Professions	\$ 70,833
Health Innovation Center	\$ 8,000,000
College of Informatics	\$ 272,954
Chase College of Law	\$ 712,087
Go Norse Fund	\$ 257,222
Steely Library	\$ 94,971
NKU Fund for Excellence	\$ 222,629
Academic Affairs & University Designated Initiatives	\$ 120,169
Student Affairs	\$ 7,851
University Wide Student Aid	\$ 1,260,119
WNKU (membership & underwriting)	\$ 839,764
<b>Total</b>	<b>\$ 13,176,425</b>

## **ORGANIZATIONAL CHANGES REPORT**

### **ADMINISTRATION AND FINANCE**

#### **University Police**

University Police now reports to the Division of Student Affairs. University Police has worked closely with Student Affairs for many years, and this move more closely aligns their shared goal of putting our students first. The duties and responsibilities of University Police will not change, and oversight of Safety and Emergency Management will remain within Administration and Finance.

#### **Facilities Management**

The Facilities Management Department implemented a new organizational structure to better align operational functions with strategic priorities. The organizational changes include:

- The Electrical Shop will report to the Superintendent of Mechanical and Electrical Systems (formerly the Superintendent of Mechanical Systems).
- The Superintendent of Mechanical and Electrical Systems will report to the Director of Sustainability and Energy Management (formerly the Director of Energy Management).

These changes will consolidate leadership of the electrical, HVAC/general maintenance, and power plant operations under a single superintendent and provide a direct reporting relationship between energy management and these departments. This will facilitate the implementation of energy conservation strategies and performance of responsibilities of the Director of Sustainability and Energy Management.

### **ACADEMIC AFFAIRS**

#### **Grant County Center**

The Grant County Center now reports to the Associate Provost for Learning Sciences & Technology and Dean of the Library. The change in reporting structure better aligns the facility with the Library/CITE structure, facilitating information literacy and outreach services to the Center and its surrounding community.

#### **Center for Environmental Restoration**

The Center for Environmental Restoration now reports to Graduate Education, Research and Outreach instead of to Research, Grants and Contracts.

#### **First Year Programs**

First Year Programs will now report to Vice Provost for Undergraduate Academic Affairs. The First Year Programs' mission and activities align better with the portfolio under the VPUAA.

### **Learning PLUS**

The Learning Assistance Center has changed its name to Learning PLUS. When the Learning Assistance Programs unit was formed in 2006, it consisted of three peer-learning programs (the Math Center, the Writing Center, and Supplemental Instruction) as well as the developmental education programs (literacy and mathematics). As part of university-wide restructuring in the summer of 2015, two new programs were added to the Learning Assistance Center: the School-Based Scholars program and Pathways and Articulation Agreements. To recognize these additions, as well as to better market the department's services, the LAP is being renamed to Learning PLUS (Pathways & Articulation Agreements, Learning Center, Undergraduate Preparation, and School-Based Scholars).

### **Office of Distance and Online Education (formerly Educational Outreach)**

The Office of Distance and Online Education has managed our online and PACE programs for a number of years, providing NKU with an important presence in the area of adult education and online learning. Online Education will become a part of CITE and its staff will report to Dr. Arne Almquist, Associate Provost for Learning Sciences & Technologies and Dean of the Library. The PACE Program will report to Dr. Idna Corbett, Vice Provost for Undergraduate Academic Affairs, and PACE will become an initiative of Undergraduate Academic Affairs. These changes were made to increase cost efficiencies and to better align these two programs with other related units.

### **Enrollment and Financial Assistance**

The Department of Enrollment and Degree Management reorganization was implemented on July 1, 2015. Since that reorganization, the department has identified the need for two modifications of the structure in order to better support the department's function. The Office of Admissions, Student Financial Assistance, and Transfer Services currently reports to the Assistant Vice President for Enrollment and Financial Assistance. A new organizational unit, Enrollment and Financial Assistance, was created to provide for accurate administrative oversight of the above offices and specifically as it relates to financial and personnel issues within SAP. The Assistant Vice President of Enrollment and Financial Assistance will be the chief of this organizational unit. There are no budgetary considerations associated with this recommendation.

### **Veterans Resource Station (VRS)**

The VRS will now report to University Connect and Persist (UCAP). The Director of UCAP will oversee all administrative processes and provide leadership over the VRS. This reorganization places a greater emphasis and support around programs and services within the VRS along the life cycle of the student.

## **STUDENT AFFAIRS**

### **Vice President for Student Affairs**

Realignment and reporting changes within the Division of Student Affairs were instituted to reinstate the structure that existed prior to June 2015. The Vice President and Dean of Students position has changed to Vice President for Student Affairs. The Assistant Vice President for

Student Engagement and Business Operations will now be named the Assistant Vice President for Student Engagement and Dean of Students. The Assistant Vice President for Student Inclusiveness will now be the Assistant Vice President for Student Affairs.

#### **Assistant Vice President for Student Engagement and Dean of Students**

The Dean of Students (DOS) position has been separated from the Vice President for Student Affairs (VP) role and is now the Assistant Vice President for Student Engagement and Dean of Students. This change reinstates the conduct area back to the Dean of Students reporting line, a typical student affairs model and one that was used at NKU prior to June 2015.

All areas previously reporting to the AVP for Student Engagement and Business Operations will now report to the AVP for Student Engagement and Dean of Students, with the exception of Health Counseling and Student Wellness (HCSW). HCSW was removed from the Dean of Students' portfolio in order to avoid a potential conflict of interest since mandated assessments that are conducted through HCSW can be an outcome of the student conduct process. The AVP and DOS now supervise eight areas within Student Affairs - Student Conduct, Rights and Advocacy, Fraternity and Sorority Life, Student Engagement, Student Union, University Housing, Campus Recreation, Early Childhood Center, and Conference Management.

#### **Assistant Vice President for Student Affairs**

The AVP for Student Inclusiveness title was changed back to the previous title of Assistant Vice President for Student Affairs. The AVP for Student Affairs now supervises all areas previously reporting to the AVP for Student Inclusiveness (African American Programs and Services, Latino Programs and Services, LGBTQ Programs and Services, Disability Programs and Services, Upward Bound, LEAP, and Educational Talent Search), plus the addition of Health Counseling and Student Wellness, Norse Violence Prevention Center and Ombuds Services.

**RECOMMENDATION:**

That the following academic affairs personnel actions receive Board of Regents approval:

**ADMINISTRATIVE APPOINTMENTS:**

**Dr. John Alberti**, from professor in the Department of English in the College of Arts and Sciences to professor in the Department of English and associate dean of the College of Arts and Sciences, effective July 1, 2016.

**Mr. Matthew Albritton**, from associate professor in the Visual Arts Program in the School of the Arts to associate professor and program head of the Visual Arts Program in the School of the Arts, effective August 15, 2016.

**Dr. Roland Coloma**, professor (with tenure) and chair in the Department of Teacher Education in the College of Education and Human Services, effective July 18, 2016.

**Dr. Maureen Doyle**, from associate professor in the Department of Computer Science and associate dean in the College of Informatics to associate professor and interim chair of the Department of Computer Science in the College of Informatics, effective July 1, 2016.

**Mr. Michael King**, from associate professor in the Theatre and Dance Program in the School of the Arts to associate professor and program head of the Theatre and Dance Program in the School of the Arts, effective August 15, 2016.

**Dr. Mary C. Kishman**, from chair of the Department of Nursing in the College of Health Professions to chair of the Department of Nursing and director of the Nurse Advocacy Center for the Underserved in the College of Health Professions, effective May 26, 2016.

**Dr. Gail Mackin**, from professor in the Department of Mathematics and Statistics and associate dean of the College of Arts and Sciences to professor in the Department of Mathematics and Statistics and senior associate dean of the College of Arts and Sciences, effective July 1, 2016.

**Dr. Diana McGill**, from professor in the Department of Chemistry in the College of Arts and Sciences to professor in the Department of Chemistry and interim dean of the College of Arts and Sciences, effective July 1, 2016.

**Dr. Burke Miller**, from associate professor and acting chair in the Department of History and Geography in the College of Arts and Sciences to associate professor and chair in the Department of History and Geography in the College of Arts and Sciences, effective July 1, 2016.

**Dr. Patrick Schultheis**, from professor in the Department of Biological Sciences in the College of Arts and Sciences to professor and interim chair in the Department of Biological Sciences in the College of Arts and Sciences, effective July 1, 2016.



**Dr. Tracey Sigler**, from associate professor in the Department of Management in the Haile/US Bank College of Business to associate professor and chair in the Department of Management in the Haile/US Bank College of Business, effective July 1, 2016.

**Dr. Gannon Tagher**, from assistant professor in the Department of Nursing in the College of Health Professions to assistant professor in the Department of Nursing and director of the Bachelor of Science in Nursing Program in the College of Health Professions, effective August 15, 2016.

**Dr. David Tataw**, associate professor (with tenure) in the Department of Allied Health and associate dean of the College of Health Professions, effective July 1, 2016.

**Mr. Jason Vest**, from assistant professor in the Music Program in the School of the Arts to assistant professor and program head of the Music Program in the School of the Arts, effective August 15, 2016.

**Dr. Stephen Yungbluth**, from associate professor in the Department of Communication in the College of Informatics to associate professor in the Department of Communication and associate dean of the College of Informatics, effective July 1, 2016.

**Dr. Lynne Zajac**, from assistant professor in the Department of Advanced Nursing Studies in the College of Health Professions to assistant professor in the Department of Advanced Nursing Studies and director of the Doctor of Nursing Program in the College of Health Professions, effective August 15, 2016.

Mini Vita Follows

#### **FACULTY APPOINTMENTS:**

**Mr. Jason Applegate**, assistant professor in the Department of Allied Health in the College of Health Professions, effective August 15, 2016.

**Ms. Rachael Banks**, assistant professor in the Visual Arts Program in the School of the Arts, effective August 15, 2016.

**Dr. Janaina Siegler Marques Batista**, visiting assistant professor in the Department of Management in the Haile/US Bank College of Business, effective August 15, 2016.

**Ms. Maren Carpenter-Fearing**, assistant professor in the Visual Arts Program in the School of the Arts, effective August 15, 2016.

**Dr. Rasib Khan**, assistant professor in the Department of Computer Science in the College of Informatics, effective August 15, 2016.

**Dr. Gary Ozanich**, associate professor of practice in the Department of Business Informatics in the College of Informatics, effective August 15, 2016.

**Dr. William Terry Ray**, clinical professor in the Department of Advanced Nursing Studies in the College of Health Professions, effective July 1, 2016.

**Dr. Gang Sun**, assistant professor in the Department of Physics, Geology and Engineering Technology in the College of Arts and Sciences, effective August 15, 2016.

**Dr. Kalif Vaughn**, assistant professor in the Department of Psychological Science in the College of Arts and Sciences, effective August 15, 2016.

**Mr. David Wilkerson**, lecturer (non-tenure track renewable) in the Department of Counseling, Social Work and Leadership in the College of Education and Human Services, effective August 15, 2016.

Mini Vitas Follow

### **TRANSITIONS:**

**Ms. Paulette Ebert**, from lecturer (non-tenure track renewable) in the Learning Assistance Program to lecturer (non-tenure track renewable) in the Department of Mathematics and Statistics in the College of Arts and Sciences, effective August 15, 2016.

**Mr. Michael Hatton**, from assistant professor and program head in the Theatre and Dance Program in the School of the Arts to associate professor in the Theatre and Dance Program in the School of the Arts, effective August 15, 2016.

**Dr. William Landon**, from chair in the Department of History and Geography in the College of Arts and Sciences to associate professor in the Department of History and Geography in the College of Arts and Sciences, effective August 15, 2016.

**Dr. Eric Knechtges**, from associate professor and program head in the Music Program in the School of the Arts to professor in the Music Program in the School of the Arts, effective August 15, 2016.

**Mr. Roger McCombs**, from associate professor and program head in the Visual Arts Program in the School of the Arts to associate professor in the Visual Arts Program in the School of the Arts, effective August 15, 2016.

**Ms. Juliane Stockman**, from associate director of Career Services to lecturer (non tenure-track renewable) and associate director of Corporate Engagement in the Center for Applied Informatics in the College of Informatics, effective August 1, 2016.

**Dr. Judy Voelker**, from associate professor in the Department of Sociology, Anthropology, and Philosophy and associate dean in the College of Arts and Sciences, to associate professor in Sociology, Anthropology and Philosophy in the College of Arts and Sciences, effective August 15, 2016.

Mini Vita Follows

### **REQUEST FOR LEAVE, PAID/UNPAID:**

**Dr. Miriam Kannan**, Regent's professor in the Department of Biological Sciences, retraction of unpaid leave request. *\* The unpaid leave of absence request approved for Dr. Kannan on September 2, 2015 was contingent upon the successful funding of the research proposal that would have accompanied the Promoteo Scholar Award in Ecuador. The Promoteo grant program is being placed on hold at this time. Therefore, we request the withdrawal of that approval.*

A withdrawal of Dr. Miriam Kannan's previously approved leave of absence, September 2, 2015, has been requested.

### **RETIREMENTS:**

**Dr. Stephen Mueller**, professor in the Department of Management in the Haile/US Bank College of Business, effective May 17, 2016.

**Dr. Robert Snyder**, professor in the Department of Management in the Haile/US Bank College of Business, effective May 17, 2016.

### **PHASED RETIREMENTS:**

**Dr. Tripta Desai**, professor in the Department of History and Geography in the College of Arts and Sciences, beginning at the start of the 2016-17 academic year and terminating at the end of the 2017-18 academic year.

**Ms. Cindy Foster**, associate professor in the Department of Advanced Nursing Studies in the College of Health Professions, beginning at the start of the 2016-17 academic year and terminating at the end of the 2017-18 academic year.

**Dr. Katherine Kurk**, professor in the Department of World Languages and Literatures in the College of Arts and Sciences, beginning at the start of the 2017 spring semester and terminating at the end of the 2018 fall semester.

**Dr. Louise Niemer**, associate professor in the Department of Nursing in the College of Health Professions, beginning at the start of the 2017 spring semester and terminating at the end of the 2019 fall semester.

### **DEPARTURES:**

**Dr. Benjamin Baran**, assistant professor of management in the Department of Management in the Haile/US Bank College of Business, effective May 17, 2016.

**Dr. Katherine Frank**, dean of the College of Arts and Sciences, effective July 1, 2016.

**Dr. Bertie Greer**, professor and chair in the Department of Management in the Haile/US Bank College of Business, effective July 1, 2016.

**Dr. Lisa Knapp**, lecturer in the Department of Nursing in the College of Health Professions, effective May 17, 2016.

**Dr. Karen Koner**, assistant professor and coordinator of music education in the Music Program in the School of the Arts, effective May 17, 2016.

**Dr. Thomas Lambert**, assistant professor of Public Administration in the Department of Political Science, Criminal Justice and Organizational Leadership in the College of Arts and Sciences, effective August 8, 2016.

**Dr. Jaime McCauley**, assistant professor in the Department of Sociology, Anthropology and Philosophy in the College of Arts and Sciences, effective July 1, 2016.

**Dr. James McGuffee**, associate professor and chair of the Department of Computer Science in the College of Informatics, effective July 1, 2016.

**Dr. Kenneth Rhee**, associate professor in the Department of Management in the Haile/US Bank College of Business, effective August 9, 2016.

**Dr. Porsha Robinson-Ervin**, assistant professor in the Department of Teacher Education in the College of Education and Human Services, effective July 31, 2016.

**Ms. Patricia Sisson**, lecturer II (non-tenure track renewable) in the Department of Mathematics and Statistics in the College of Arts and Sciences, effective July 1, 2016.

**Dr. Patricia Sunderhaus**, lecturer in the Department of Advanced Nursing Studies in the College of Health Professions, effective May 17, 2016.

**Mr. E. Shane Talbott**, lecturer, Office of the Dean, College of Health Professions, effective July 1, 2016.

#### **TEMPORARY FACULTY APPOINTMENTS:**

##### **College of Arts and Sciences**

Biological Sciences	Mr. Steve Castellano	Academic Year
Chemistry	Dr. Beatriz Russell	Academic Year
CINSAM	Ms. Ella Bowling	Academic Year
	Mr. Rueben Bullard	Academic Year
	Ms. Amber Carter	Academic Year

English	Dr. Rhonda Davis	Academic Year
	Dr. Kristi Brock	Academic Year
	Dr. Stephen Leigh	Academic Year
History and Geography	Dr. Connie Bruins	Academic Year
	Dr. Mary Bucklin	Academic Year
	Mr. Joseph Lombardi	Academic Year
	Ms. Kathleen Quinn	Academic Year
	Ms. Meredith Smith	Academic Year
Mathematics and Statistics	Ms. Shelley Cain	Academic Year
	Mr. Michael Collins	Academic Year
	Ms. Chrystal Culbertson	Academic Year
	Ms. Marla Lemmon	Academic Year
	Ms. Barbara Phillips	Academic Year
	Ms. Laura Urbanski	Academic Year
Music	Dr. Amy Gillingham	Academic Year
	Dr. Eleanor Todd	Academic Year
Physics, Geology & Engineering Technology	Dr. David Cain	Academic Year
	Mr. Daniel Hunter	Academic Year
	Dr. Mohsen Keshtvart	Academic Year
	Mr. Roger Miller	Academic Year
Political Science, Criminal Justice & Organizational Leadership	Mr. Jeffrey Girton	Academic Year
Psychological Science	Dr. Smita Ward	Academic Year
	Dr. Eliah White	Academic Year
Sociology, Anthropology & Philosophy	Dr. Gary Blahnik	Academic Year
	Dr. Nicole Grant	Academic Year
	Dr. Michael Simonton	Academic Year
	Ms. Kristina Vise	Academic Year
Theater & Dance	Ms. Christine Jones	Academic Year
Visual Arts	Mr. Christopher Smith	Academic Year
	Ms. Jee Eun Lee	Academic Year
World Languages & Literatures	Dr. Andrea Fieler	Academic Year
	Ms. Sandra Bazzani Aronne	Academic Year

## **College of Informatics**

Business Informatics

Mr. Anthony Burk

Academic Year

Ms. Sarah Mann

Academic Year

Ms. Crystal Summers

Academic Year

Mr. Bradley Metzger

Fiscal Year

Communication

Mr. Nicholas Brummer

Academic Year

Ms. Michelle Crowley

Academic Year

Mr. Tom Streeter

Academic Year

Mini Vitas Follow

## MINI VITA

**Name:** John Alberti

**Title:** Professor and Associate Dean

**Education:** Ph.D. in English, 1989, University of California, Los Angeles  
MA in English, 1984, University of California, Los Angeles  
BA in English, 1981, University of Southern California, Los Angeles

**Experience:** 2013-Present, Director, English Graduate Program  
2009-Present, Director, Cinema Studies  
2003-Present, Professor of English, Northern Kentucky University  
2001-2009, Assistant Chair, Department of English (formerly Literature and Language), Northern Kentucky University  
1997-2003, Associate Professor of English, Northern Kentucky University  
1991-1997, Assistant Professor of English, Northern Kentucky University

## MINI VITA

**Name:** Matthew Albritton

**Title:** Associate Professor and Program Head of the Visual Arts Program

**Education:** MFA in Photography, 2001, University of Texas at Austin  
BA in Biology, 1993, University of California at Santa Cruz

**Experience:** 2016-Present, Associate Professor of Art, Northern Kentucky University  
2012-2016, Assistant Professor of Art, Northern Kentucky University  
2001-2012, Lecturer in Art, Northern Kentucky University  
2011 Instructor, Japan Summer Program, Kentucky Institute for Study Abroad  
2004 Instructor, London Summer Program, Northern Kentucky University  
2003 Photographer, Classics Department, University of Cincinnati  
2002 Workshop Instructor, Maine Photographic Workshops



## MINI VITA

**Name:** Roland Coloma

**Title:** Professor and Chair

**Education:** Ph.D. in Cultural Studies in Education, 2004, The Ohio State University

MA in Cultural Studies in Education, 2002, The Ohio State University

Teaching Credential in English, 1999, California State Polytechnic University - Pomona

MA in Educational Administration, 1998, University of California-Riverside

BA in Liberal Studies, 1995, University of California-Riverside

**Experience:** 2014-2016, Professor, Miami University, Ohio

2014-2015, Chair, Department of Teacher Education, Miami University, Ohio

2008-2014, Associate Professor, OISE University of Toronto, Canada

2006-2008, Assistant Professor, Miami University, Ohio

2004-2005, Assistant Professor, Otterbein University, Ohio

2000-2004, Graduate Fellow and Research & Teaching Associate, The Ohio State University

1999-2000, Teacher, Los Angeles High School

1997-1999, Teacher, Baldwin Park High School

1997, Teacher, Ramona High School

1993-1996, Coordinator, Asian Pacific Student Programs, University of California-Riverside

## MINI VITA

**Name:** Dr. Maureen Doyle

**Title:** Associate Professor and Interim Chair

**Education:** Ph.D. in Scientific Computing and Computational Mathematics, 2004, Stanford University

MS in Scientific Computing and Computational Mathematics, 2001, Stanford University

MS in Mathematics, 1990, Northeastern University

BS in Mathematics, University of Massachusetts at Lowell

**Experience:** 2013–2016, Associate Professor of Computer Science and Associate Dean College of Informatics, Northern Kentucky University

2011–Present, Associate Professor of Computer Science, Northern Kentucky University

2006–2013, Assistant Professor of Computer Science, Northern Kentucky University

2003–2006, Assistant Professor of Computer Science, Morehead State University

2001–2003, Teaching Assistant of Computer Science, Stanford University

1983–1985, Adjunct Instructor of Computer Science, University of Lowell

## MINI VITA

**Name:** Michael King

**Title:** Associate Professor and Program Head, Theatre and Dance Program

**Education:** MFA in Theatre, 1995, University of Florida  
BA in English, 1980, University of Florida

**Experience:** 1991-2016, Associate Professor of Theatre, Northern Kentucky University  
1985-1991, Assistant Professor of Theatre, Northern Kentucky University  
2006-2008, Assistant Chair Department of Theatre, Northern Kentucky University  
1991-1992, Artistic Director, Jenny Wiley Theatre  
1990-1991, Casting Director, Jenny Wiley Theatre

## **MINI VITA**

**Name:** Mary C. Kishman, Ph.D., RN

**Title:** Associate Professor and Chair in the Department of Nursing

**Education:** Ph.D., 2004, University of Cincinnati, Cincinnati, OH  
MSN, 1991, Medical Surgical, University of Cincinnati, Cincinnati, OH  
BSN, 1987, Xavier University, Cincinnati, OH  
Diploma in Nursing, 1976, Jewish Hospital School of Nursing, Cincinnati, OH

**Experience:** 2014-Present, Associate Professor and Chair in the Department of Nursing,  
Northern Kentucky University

2009-2011, 2012-Present, Chair, Graduate Nursing Programs, Mount St. Joseph

2009-2011, 2012-Present, MAGELIN-MSN Program Director, Graduate Nursing  
Programs, Mount St. Joseph

2011-2012, Chair, Department of Nursing, Mount St. Joseph

2007-2008, Interim MN Program Director, Mount St. Joseph

2000-2001, 2002-2003, Assistant Chair, Department of Nursing, Mount St.  
Joseph

2004-2014, Associate Professor, Mount St. Joseph

1994-1996, 1998-2004, Assistant Professor, Mount St. Joseph

1991-1994, Instructor, Mount St. Joseph

## MINI VITA

**Name:** Gail Mackin

**Title:** Professor and Senior Associate Dean

**Education:** Ph.D. in Mathematics, 1997, Virginia Polytechnic Institute & State University  
MS in Mathematics, 1993, Virginia Polytechnic Institute & State University  
BS in Mathematics & Physics, 1991, Keene State College, Keene NH

**Experience:** 2014-2016, Professor of Mathematics and Associate Dean of the College of Arts and Sciences, Northern Kentucky University  
2013-2016, Professor of Mathematics, Northern Kentucky University  
2013-2016, Project SOAR (Scholarships, Opportunities, Achievements & Results) Co-Director, Northern Kentucky University  
2011-2013, Project SOAR Director, Northern Kentucky University  
2009-2016, Assistant to the Chair of the Department of Mathematics & Statistics, Northern Kentucky University  
2009-2010, Assistant to the Dean of the College of Arts & Sciences, Northern Kentucky University  
2007-2009, Interim Chair of the Department of Mathematics, Northern Kentucky University  
2005-2007, Assistant to the Chair of the Department of Mathematics & Computer Science, Northern Kentucky University  
2005-2013, Associate Professor of Mathematics, Northern Kentucky University  
2001-2005, Assistant Professor of Mathematics, Northern Kentucky University  
2000-2001, Assistant Professor of Mathematics, Western Carolina University  
1997-2000, Assistant Professor of Mathematics, Georgia Southern University

## MINI VITA

**Name:** Diana McGill

**Title:** Professor and Interim Dean

**Education:** Ph.D. in Biochemistry, 1991, Harvard University

BS in Biology, 1984, Northern Kentucky University

BA in Chemistry, 1983, Northern Kentucky University

**Experience:** 2008-2016, Professor of Chemistry, Northern Kentucky University

2003-2012, Chair, Department of Chemistry, Northern Kentucky University

1998-2008, Associate Professor of Chemistry, Northern Kentucky University

1993-1998, Assistant Professor of Chemistry, Northern Kentucky University

1991-1993, Post-Doctoral Research Associate, University of Cincinnati College of Medicine

## MINI VITA

**Name:** Burke Miller

**Title:** Associate Professor and Chair

**Education:** Ph.D. in History, 2002, Miami University

MA in History, 1993, Miami University

BA in Education, 1986, University of North Carolina

**Experience:** 2015-2016, Acting Chair of the Department of History and Geography, Northern Kentucky University

2011-Present, Associate Professor of History and Geography Northern Kentucky University

2014-2015, Assistant Chair of the Department of History and Geography, Northern Kentucky University

2005-2011, Assistant Professor of History and Geography, Northern Kentucky University

2001-2005, Adjunct Professor of History, Miami University

2001-2005, Teacher of American History, Hamilton High School

1999-2001, Lecturer of History and Geography, Northern Kentucky University

1994-1999, Teaching Associate of History, Miami University

1986-1992, Teacher of Social Studies, Ledford High School

## MINI VITA

**Name:** Patrick Schultheis

**Title:** Professor and Interim Chair

**Education:** Ph.D. in Molecular Genetics, Biochemistry, and Microbiology, 1994,  
University of Cincinnati

MS in Biology, 1986, University of Dayton

BS in Biology, 1984, University of Dayton

**Experience:** 2012-Present, Professor of Biological Sciences, Northern Kentucky University

2005-2012, Associate Professor of Biological Sciences, Northern Kentucky  
University

1999-2005, Assistant Professor of Biological Sciences, Northern Kentucky  
University

1994-1999, Post-doctoral Associate, University of Cincinnati College of Medicine



## MINI VITA

**Name:** Dr. Tracey Sigler

**Title:** Associate Professor and Chair

**Education:** Ph.D. in Business Administration & Management, 1997, University of North Carolina at Chapel Hill

MBA in Organizational Studies, 1991, Bowling Green State University

BBA in Purchasing/Operations Management, 1985, Bowling Green State University

**Experience:** 2007-Present, Associate Professor, Management, Northern Kentucky University

2007-2011, Associate Professor and Chair, Management and Marketing, Northern Kentucky University

2001-2007, Assistant Professor, Management and Marketing, Northern Kentucky University

1997-2001, Assistant Professor, Western Washington University

1990-1993, Instructor, Bowling Green State University

1985-1989, Buyer, Chrysler Motors Corporation

## **MINI VITA**

Name: Catherine Gannon Tagher

Title: Assistant Professor of Nursing

Education: EdD, Nurse Educator Track, 2014, Northern Kentucky University

MSN, Pediatric Nurse Practitioner Program, 2001, University of Kentucky

BSN, 1992, University of Kentucky

Experience: 2013-Present, BSN Program Director

2008-Present, Assistant Professor of Nursing, Northern Kentucky University

2005-2008, Lecturer, Northern Kentucky University

## MINI VITA

**Name:** Dr. David Tataw

**Title:** Associate Professor and Associate Dean

**Education:** Ph.D. in Political Science, 2001, University of Southern California

MPA in Health Administration, 1996, University of Southern California

MA in Political Science, 1996, University of Southern California

MA in Political Science, 1992, California State University

MA in Management Information Systems, 1990, West Coast University

BA in English, 1982, Yaounde University, Cameroon

**Experience:** 2012-2016, Chair and Director of Graduate Programs, College of St. Elizabeth

2010-2016, Adjunct Faculty of Health Services Administration, Strayer University

2010-2012, Founding Faculty Health Management Program of the School of Public and Environmental Affairs, Indiana University

2009-2010, Visiting Professor of Public Policy and Administration, Jackson State University

2007-2009, Director of Institutional Special Grants, Western University of Health Sciences

## MINI VITA

**Name:** Jason Vest

**Title:** Assistant Professor and Program Head of the Music Program

**Education:** DMA in Vocal Music Performance, 2009, University of Kentucky  
MM in Vocal Music Performance, 2005, Brigham Young University  
American Institute of Musical Studies, 2004, Graz, Austria  
BM in Vocal Music Performance, 2002, Butler University

**Experience:** 2008-Present, Assistant Professor of Voice, Northern Kentucky University  
2008-2016, Staff Writer, Classical Singer Magazine  
2008-2011, Teaching Assistant, Vocal Beauty Boot Camp, BYU  
2005-2008, Teaching Assistant, University of Kentucky  
2003-2005, Teaching Assistant, Brigham Young University

## MINI VITA

**Name:** Dr. Stephen Yungbluth

**Title:** Associate Professor and Associate Dean

**Education:** Ph.D. in Communication, 2003, University of Kentucky

MA in Communication, 1996, University of Kentucky

BA in Organizational Communication, 1994, Xavier University

**Experience:** 2012-2016, Associate Professor of Communication and Communication Studies  
Program Director, Northern Kentucky University

2010-Present, Associate Professor of Communication, Northern Kentucky  
University

2004-2010, Assistant Professor of Communication, Northern Kentucky  
University

2010, Reviewer, Pearson, Allyn & Bacon Publishers

2005, Reviewer, McGraw Hill

2000-2004, Lecturer, Arizona State University West

2000, Research Assistant, University of Kentucky

1997-1999, Research Assistant, University of Kentucky

1997, Editor of the Connection, University of Kentucky

1990-1994, Student Assistant for Special Events and Protocol Department, Xavier  
University

1993, Student Director of Manresa New Student Orientation Program, Xavier  
University

## MINI VITA

**Name:** Dr. Lynne Zajac

**Title:** Assistant Professor

**Education:** Ph.D. in Nursing Education, 2010, University of Northern Colorado

MSN in Nurse Practitioner, 1994, Western Reserve University

BS in Nursing, 1981, Albright College

**Experience:** 2015-2016, Assistant Professor in the Department of Advanced Nursing Studies and APRN Program Director, Northern Kentucky University

2009-2015, Graduate Faculty of the College of Nursing, Lourdes University

2004-2009, BSN Faculty, Mercy College of Ohio

1994-2000, Instructor/Assistant Professor, Owens Community College

## MINI VITA

**Name:** Jason Applegate

**Title:** Assistant Professor

**Education:** MS in Radiologic Science, 2009, Midwestern State University

BS in University Studies, 2002, Morehead State University

AAS in Applied Sciences: Radiologic Technology, 1995, Morehead State University

**Experience:** 2007-2014, Assistant Professor of Radiologic Sciences, Morehead State University

2014-2016, Radiologic Technologist, Meadowview Regional Medical Center, Maysville, KY

2007-2014, Assistant Professor of Radiologic Sciences, Morehead State University

2004-2008, Nuclear Medicine Technologist, Ohio Valley Heart, Maysville, KY

2002-2007, Radiologic Technologist/Nuclear Medicine Technologist, Meadowview Regional Medical Center, Maysville, KY

## MINI VITA

**Name:** Rachael Banks

**Title:** Assistant Professor

**Education:** MFA in Photography, 2015, Texas Woman's University, Denton, TX  
BA in Photography/Digital Media/Painting, 2012, Bellarmine University, Louisville, KY  
KIIS Study Abroad Program, Western Kentucky University, Bregenz, Austria

**Experience:** 2015-016, Adjunct Instructor of Photography, Texas Woman's University, Denton, TX  
2014-2015, Graduate Assistant, Texas Woman's University, Denton, TX  
2013-2014, Archivist, Joyce Elaine Grant Exhibition, Texas Woman's University, Denton, TX



## MINI VITA

**Name:** Dr. Janaina (Jane) Siegler Marques Batista

**Title:** Visiting Assistant Professor

**Education:** Ph.D. in Supply Chain Management, 2015, Fundacao Getulio Vargas Business School of São Paulo (São Paulo, Brazil)

MS in Organizational Management, 2009, University of São Paulo

MBA in Human Resource Management, 2006, Centro Universitario do Triangulo Mineiro Uberlândia

MBA in Finance and Management Accounting, 2001, Federal University of Uberlândia

BS in Business Administration (honors), 1997, Federal University of Uberlândia

**Experience:** 2013-2015, Visiting Scholar and Adjunct Professor, Kelley School of Business at Indiana University

2011-2015, Research Assistant, Fundacao Getulio Vargas Business School of São Paulo

2009-2011, Dean of Students and Assistant Professor, Universidad de Uberlandia School of Business

2007-2013, Assistant Professor, Escola Superior de Administração, Marketing e Comunicacao Uberlândia

2007-2009, Research Assistant, University of São Paulo

1997-2007, Principal, Escola de Estetica do Triangulo

2003-2006, Lecturer, Centro Universitario do Triangulo

2005-2012, Consultant in General and Small Business Management

1992-2008, Entrepreneur, Fisio e Estetica Ltda.

2012, Program Committee, XIX CONAMERCO-Congresso de Administração do Mercosul, Uberlândia

2012, Scientific Committee, II ENFAGEN Uberlândia

## MINI VITA

**Name:** Maren Carpenter-Fearing

**Title:** Assistant Professor

**Education:** MDes in Graphic Design, 2011, University of Cincinnati

BS in Graphic Design, 2006, University of Cincinnati

**Experience:** 2014-2016, Lecturer in Art, Northern Kentucky University

2011-2012, Visiting Assistant Professor, University of Cincinnati

2006, Freelance designer

## MINI VITA

**Name:** Dr. Rasib Khan

**Title:** Assistant Professor

**Education:** Ph.D. in Computer and Information Sciences, 2016, University of Alabama in Birmingham

MS in Security and Mobile Computing, 2011, Aalto University

MS in Communication Systems and Design, 2011, Royal Institute of Technology

BS in Computer Science and Information Technology, 2008, Islamic University of Technology

**Experience:** 2012-2016, Graduate Research Assistant, University of Alabama in Birmingham

2011-2011, Researcher of PURSUIT Project, Helsinki Institute for Information Technology

2010-2010, Summer Research Assistant of Telecommunications, Royal Institute of Technology

2009-2009, Lecturer of Computer Science and Information Technology, Islamic University of Technology

2008-2009, R&D Software Engineer, SIP Technologies, Dhaka, Bangladesh

2007-2008, Part-time Junior Software Programmer, Xeon Software Ltd., Dhaka, Bangladesh

2007-2007, Intern of IT Operations, Grameen Phone Pvt. Ltd., Dhaka, Bangladesh

## MINI VITA

**Name:** Dr. Gary Ozanich

**Title:** Associate Professor of Practice

**Education:** Ph.D. in Mass Communication, 1982, University of Wisconsin-Madison

MA in Telecommunication, 1974, Michigan State University

BS in Zoology, 1973, Michigan State University

**Experience:** 2015-2016, Lecturer of Health Informatics, Northern Kentucky University

2014-2015, Senior Research Associate for the Center for Applied Informatics,  
Northern Kentucky University

2007-2011, Director of Strategic Initiatives, College of Informatics, Northern  
Kentucky University

2007-2010, Director of Graduate Program Health Informatics, College of  
Informatics, Northern Kentucky University

2006-2007, Interim Associate Dean, College of Informatics, Northern Kentucky  
University

2005-2006, Lecturer, College of Informatics, Northern Kentucky University

2004, Adjunct Associate Professor, Department of Communication, University of  
Cincinnati

1999-2003, Visiting Associate Professor, School of Informatics, University at  
Buffalo-State University of New York

1992-1994, Associate Director, Institute for Tele-Information, Graduate School of  
Business, Columbia University

1982, Assistant Professor of Telecommunications, Michigan State University

## MINI VITA

**Name:** Dr. William Terry Ray

**Title:** Clinical Professor and Director of CRNA Program

**Education:** Ph.D. in Nursing Science, 1997, University of Cincinnati

MSN in Nursing Education, 1992, University of Arkansas for Medical Sciences

Certificate in Anesthesia in Nurse Anesthesia, 1983, Mayo Foundation School of Health Related Sciences

BSN, 1978, University of Central Arkansas

AASN, 1974, Phillips County Community College

**Experience:** 2015-2016, Visiting Professor of Advanced Nursing Studies, Northern Kentucky University

2015-2016, Assistant Professor-Clinical Emeritus, University of Cincinnati

2010-2015, Program Director of Nurse Anesthesia Major and Assistant Professor of Clinical Nursing, University of Cincinnati

2008-2015, Staff CRNA/Clinical Instructor, CRNA Practice, University of Cincinnati

## MINI VITA

**Name:** Dr. Gang Sun

**Title:** Assistant Professor

**Education:** Ph.D. in Ag & Biosystems Engineering, 2010, Iowa State University

MS in Environmental Engineering, 2006, University of Saskatchewan, Canada

MS in Bioenvironmental Engineering, 2002, Zhejiang University, China

BE in Electrical Engineering, 1996, Zhejiang University of Technology, China

**Experience:** 2013-2016, Assistant Professor of Engineering Technology & Industrial Distribution, Texas A&M University

2012-2013, Postdoctoral Research Associate, Texas A&M University

2010-2012, Postdoctoral Research Associate & Lecturer, Iowa State University

2006-2010, Graduate Research Assistant, Iowa State University

2004-2006, Graduate Research Assistant, University of Saskatchewan, Canada

2002-2004, Assistant Professor of Mechatronics Engineering, Zhejiang Sci-Tech University, China

1999-2002, Graduate Research Assistant, Depts. of Biomedical Engineering & Biosystems Engineering, Zhejiang University, China

2000, Visiting Scholar, Dept. of Biosystems, Catholic University of Leuven, Belgium

1996-1999, Electrical Engineer, R&D Center, Hangzhou Elevator Company, Hangzhou, China

## MINI VITA

**Name:** Kalif Vaughn

**Title:** Assistant Professor

**Education:** Ph.D. in Experimental Psychology, 2014, Kent State University

MA in Experimental Psychology, 2012, Kent State University

BA in Psychology, Purdue University

**Experience:** 2014-2016 Post Doctoral Research Fellow, Williams College

2015, Guest Lecturer Dartmouth College

2015, Guest Lecturer Williams College

## MINI VITA

**Name:** David Wilkerson

**Title:** Lecturer

**Education:** AB in Psychology, 1984, Miami University, Oxford

MSW in Social Work, 1995, University of Cincinnati

**Experience:** 2015-2016, Principle Investigator/Director, SBIRT Allied Health Professions Training Grant, Northern Kentucky University

2015-2016, Director of BSW Field Education, Northern Kentucky University

2014-2016, Clinical Mental Health Consultant, Homeward Bound Shelter for Youth, Covington, KY

2011-2016, Part-Time faculty, Department of Counseling, Social Work and Leadership, Northern Kentucky University

2008-2015, Director of the Training and Development Center, Northern Kentucky University

2006-2008, Clinical Director, REM Ohio, Inc.

2004-2006, Community Support Services Manager, Greater Cincinnati Behavioral Health Services

2003-2003, Director of Staff Development and Training, CRC Health Group, Inc./National Specialty Clinics

2001-2003, Clinic Director, East Indiana Treatment Center

1995-2001, Developmental Disabilities/Mental Health Coordinator, Cincinnati Children's Hospital

1990-1995, Developmental Disabilities/Mental Health Specialist, Cincinnati Children's Hospital



## MINI VITA

**Name:** Paulette Ebert

**Title:** Lecturer

**Education:** MA in Secondary Mathematics Education, 1996, Northern Kentucky University

BS in Mathematics, 1992, Northern Kentucky University

**Experience:** 2012-2016, Lecturer, Developmental Mathematics, Northern Kentucky University

1997-2011, Part-Time faculty, Developmental Mathematics, Northern Kentucky University

2001-2004, Full-Time High School Mathematics Teacher, Glen Este High School

1992-2001, Full-Time High School Mathematics Teacher, Campbell County High School

## MINI VITA

**Name:** Michael Hatton

**Title:** Associate Professor

**Education:** MFA in Theatre Pedagogy, 2005, Virginia Commonwealth University

BFA in Theatre Management, 2003, Northern Kentucky University

**Experience:** 2011-2016, Assistant Professor and Program Head in the Theatre and Dance Program, Northern Kentucky University

2005-2011, Lecturer in the Department of Theatre and Dance, Northern Kentucky University

2003-2005, Adjunct Instructor of Theatre and Speech, Virginia Commonwealth University

## MINI VITA

**Name:** William Landon

**Title:** Associate Professor

**Education:** Ph.D. in 2003, Italian Renaissance Studies, 2003, University of Edinburgh

MSc in Research in European Cultural Identities, 1999, University of Edinburgh

BA in History, 1998, Northern Kentucky University

**Experience:** 2013-2016, Associate Professor and Chair of the Department of History and Geography, Northern Kentucky University

2012-2013, Interim Chair Department of History Geography, Northern Kentucky University

2012-Present, Associate Professor, Department of History and Geography, Northern Kentucky University

2006-2012, Assistant Professor of European History, Northern Kentucky University

2001-2005, Lecturer in History, Northern Kentucky University

2001, Guest Lecturer, Department for Continuing Education, University of Edinburgh

1999-2001, Tutor, University of Edinburgh's School of History

## MINI VITA

**Name:** Eric Knechtges

**Title:** Associate Professor

**Education:** DM in Music Composition, 2008, Indiana University

MM in Music Composition, 2005, Bowling Green State University

BME in Music Education, 2001, Michigan State University

**Experience:** 2015-Present, Associate Professor of Music, Northern Kentucky University

2015-2016, Associate Professor and Program Head of Music Program, Northern Kentucky University

2009-2015, Assistant Professor of Music, Northern Kentucky University

2008-2009, Temporary Lecturer of Music, Northern Kentucky University

2005-2008, Assistant Instructor of Music, Indiana University

## MINI VITA

**Name:** Brad McCombs

**Title:** Associate Professor

**Education:** MFA in Trans-disciplinary Studio Arts, 2002, Carnegie Mellon University

BFA in Sculpture, 1997, Washington University in St. Louis

**Experience:** 2015-2016, Program Head of Visual Arts Program, Northern Kentucky University

2014-2015, Associate Professor of Art and Assistant Chair, Department of Visual Arts, Northern Kentucky University

2013-Present, Associate Professor of Art, Department of Visual Arts, Northern Kentucky University

2007-2013, Assistant Professor of Art, Department of Visual Arts, Northern Kentucky University

2005-2007, Art Coordinator and Assistant Professor of Art, Arts Program-Southern Campus, Ohio University

2004-2005, Visiting Assistant Professor in the School of Art, Bowling Green State University

2002-2004, Lecturer in the School of Art, Bowling Green State University

1999-2002, Graduate Assistant/Instructor in the College of Fine Arts, Carnegie Mellon University

## MINI VITA

**Name:** Ms. Juliane Stockman

**Title:** Lecturer and Associate Director of Corporate Engagement

**Education:** MS in Executive Leadership and Organizational Change, 2008, Northern Kentucky University

BS in Secondary English Education, 1993, Ohio University

**Experience:** 2011-2016, Associate Director Career Services, Northern Kentucky University

2009-2011, Associate Director of Student Affairs, Beckfield College

2008-2009, Director of Student Services, Kaplan

2005-2008, Director of Career Services, ITT Technical Institute

## MINI VITA

**Name:** Judy Voelker

**Title:** Associate Professor and Director of the Museum of Anthropology

**Education:** Ph.D. in Anthropology, 2002, State University of New York

MA in Anthropology, 1994, State University of New York

MBA in Finance, 1977, Columbia University, New York

BA in Economics and Urban Studies, 1974, Barnard College, Columbia University, New York

**Experience:** 2014-2016, Associate Professor and Associate Dean, College of Arts & Science, Northern Kentucky University

2010-Present, Associate Professor of Anthropology and Director of the Museum of Anthropology, Northern Kentucky University

2010-2016, Director, Ancient Civilizations

2011-2016, Master Advisor, Northern Kentucky University

2004–2010, Assistant Professor of Anthropology and Director of the Museum of Anthropology, Northern Kentucky University

2003, Visiting Assistant Professor, Department of Anthropology and Sociology, Hobart and William Smith Colleges

1999-2004, University of Pennsylvania Museum of Archaeology and Anthropology- Museum Applied Science Center for Archaeology (MASCA), Researcher

## MINI VITA

**Name:** Steven Castellano

**Title:** Lecturer

**Education:** Ph.D. Student in Botany/Ecology Certification, Miami University

MS in Botany/Ecology Certification, 2008, Miami University

BS in Biological Science, 2006, Northern Kentucky University

**Experience:** 2015-2016, Lecturer of Biological Sciences, Northern Kentucky University

2013-2014, Adjunct Instructor of Biology, Miami University

2006-2011, Graduate Assistant TA/RA of Botany, Miami University



## MINI VITA

**Name:** Beatriz Russell

**Title:** Lecturer

**Education:** Ph.D., Molecular Genetics, Biochemistry and Microbiology, 2009, University of Cincinnati

MA in Cell Biology and Biochemistry, 2002, Boston University

BS in Biology, 1998, University of Miami, Coral Gables

**Experience:** 2014-2016, Lecturer of Chemistry, Northern Kentucky University

2013-14, Adjunct Instructor of Chemistry, Northern Kentucky University

2012-13, Lecturer of Chemistry, Northern Kentucky University

2010-12, Part-Time Faculty of Chemistry, Northern Kentucky University

## MINI VITA

**Name:** Ella Bowling

**Title:** Outreach Specialist

**Education:** Rank I, Director of Pupil Personnel and Supervisor of Instruction, 2011,  
Morehead State University

Med Instructional Leadership, 2005, Eastern Kentucky University

B.A., 2003, Middle Grades Education

With Minors in Social Studies and Science Education, Morehead State University

**Experience:** 2005-Present, 7<sup>th</sup> Grade Science Teacher, Mason County Middle School

2007-2009, Online Professional Development Course Facilitator, E-Learning  
Kentucky

2004-2005, 7<sup>th</sup> Grade Science Teacher, Phillip A. Sharp Middle School

2004-2005, PASS Program Instructor and Social Studies Teacher, Mason County  
High School

## MINI VITA

**Name:** Reuben (Rick) G. Bullard, Jr.

**Title:** Lecturer

**Education:** Ph.D. Candidate (ABD) in Geology, University of Cincinnati

MS in Geology, 2001, University of Cincinnati

MA in Near Eastern Archaeology, 1996, Cincinnati Christian University

BA in Near Eastern Archaeology and Biblical Studies, 1982, Cincinnati Christian University

**Experience:** 2014-2016, Lecturer of Geology, Northern Kentucky University

2013-2014, Lecturer in CINSAM, Northern Kentucky University

2000-2013, Lecturer of Geology, Northern Kentucky University

2012-2016, Lecturer of Geology, Ancient History, Cincinnati Christian University

2007-2012, Assistant Professor of Geology, Ancient History, Cincinnati Christian University

2002-2006, Lecturer of Geology, Cincinnati Christian University

1986-2004, Geology Lab Instructor, University of Cincinnati

1986-1994, Instructor of Photography, Cincinnati Christian University

## MINI VITA

**Name:** Amber Carter

**Title:** Outreach Specialist

**Education:** MA in Special Education, December, 2016 (anticipated), University of the  
Cumberlands

BA in Elementary Education, 2007, Northern Kentucky University

**Experience:** 2007-2016, Elementary School Teacher, Stephens Elementary School

2012-2016, Summer Camp Instructor and Next Generation STEM Classroom  
Consultant, Center for Integrative Natural Science and Mathematics (CINSAM)

## MINI VITA

**Name:** Rhonda Davis

**Title:** Lecturer

**Education:** MA in English, 2012, Northern Kentucky University

BA in Philosophy, 1996, University of North Carolina-Asheville

**Experience:** 2012-2016, Part-Time Faculty in English, Northern Kentucky University

2012, Teaching Assistant of English, Northern Kentucky University

## MINI VITA

**Name:** Kristi Brock

**Title:** Lecturer

**Education:** MA in English and Comparative Literature, 2001, University of Cincinnati  
BA in Journalism, 1988, Northern Kentucky University

**Experience:** 2001– 2016, Lecturer, Northern Kentucky University  
1999-2001, Academic Tutor, University of Cincinnati  
1999-2001, Freelance Writer, Cincinnati Enquirer/Kentucky Enquirer

## MINI VITA

**Name:** Stephen Leigh

**Title:** Lecturer

**Education:** MA in Creative Writing, 2005, Antioch University McGregor

BFA in Art Education, 1974, University of Cincinnati

**Experience:** 2006-2016, Lecturer of Creative Writing and English, Northern Kentucky University

2001-2006, Part-Time Faculty of Creative Writing and English, Northern Kentucky University

## MINI VITA

**Name:** Connie Bruins

**Title:** Lecturer

**Education:** Ph.D. in Geography, 2005, University of Cincinnati

MA in Environmental Science, 1982, Miami University

BA Biology/Biological Sciences, 1979, Malone College

**Experience:** 2013-2015, Lecturer, Department of History and Geography

2012-2013, Part-time Faculty, Department of History and Geography

2011-2012, Lecturer, Department of History and Geography



## MINI VITA

**Name:** Mary Bucklin

**Title:** Lecturer

**Education:** EdD in Urban Educational Leadership, 2010, The University of Cincinnati

MA in Non-fiction Writing/English, 1995, The University of Iowa

MS in Education, 1984, Indiana University at Fort Wayne

BS in Physical Education for Women, 1975, Iowa State University

**Experience:** 2001-2016, Lecturer of Women's and Gender Studies Program, Northern Kentucky University

1999-2001, Department of English Composition, University of Cincinnati

2000-2016, Adjunct Instructor, Wilmington College Cincinnati Branches

1998-2001, Women's Studies Program, Northern Kentucky University

1989-1994, Department of English, Kirkwood Community College

1986-1989, Assistant Professor Physical Education Department (Coordinator of Women's Athletics and Coach), Upper Iowa University

1978-1984, High School English and PE Teacher Bishop Luers High School, Fort Wayne, IN

1976-1978, 7-12 English & K-12 PE Teacher Lohrville Community Schools, Lohrville, IA

## MINI VITA

**Name:** Joseph Lombardi

**Title:** Lecturer

**Education:** MSLS in Library Science, 2006, University of Kentucky

MA in History, 2002, Ohio University

BA in History, 1994, Miami University

**Experience:** 2013-2014, Lecturer of History, Northern Kentucky University

2009-2012, Part-Time Faculty of History, Northern Kentucky University

## MINI VITA

**Name:** Kathleen M. Quinn

**Title:** Lecturer

**Education:** Ph.D. Candidate, Classics, 2013, University of Cincinnati

MA in Classics, 1999, University of Cincinnati

MA in Archaeology, 1996, Cornell University

BA in Archaeology and Latin, 1992, College of Wooster

**Experience:** 2011-2016, Lecturer of Ancient and Early European History, Northern Kentucky University

2005-2016, Part-Time Faculty, Department of World Languages and Literatures, Northern Kentucky University

2003-2011, Part-Time Faculty, Department of History and Geography, Northern Kentucky University

2010-2011, Faculty of Latin Language, Saint Ursula Academy

2007, Adjunct Instructor of Classics, University of Cincinnati

2006-2010, Adjunct Faculty of Latin Language, Saint Ursula Academy

2006-2007, Part-Time Faculty, Department of Literature and Language, Northern Kentucky University

2004, Adjunct Instructor of Classics, Xavier University

2003-2004, Adjunct Instructor of Classics, University of Cincinnati

2001-2002, Visiting Instructor of Classics, University of Cincinnati

## MINI VITA

**Name:** Meredith Smith

**Title:** Lecturer

**Education:** Ph.D. Candidate of Educational Studies, University of Cincinnati

MA in Educational Studies, 2005, University of Cincinnati

Certificate in Peace Education, 2008, University of Cincinnati

Certificate in Urban Education, 2008, University of Cincinnati

BA in Communication, 2006, University of Cincinnati,

BA in African Studies, 2006, University of Cincinnati

**Experience:** 2008-2016, Lecturer of Women's and Gender Studies and Black Studies,  
Northern Kentucky University

2011, African American Studies, Chatfield College

2007-2008, Instructor of Peace Education, University of Cincinnati

2008, Instructor of Communications, College and Career Skills, Southwestern  
College

## MINI VITA

**Name:** David Cain

**Title:** Lecturer

**Education:** Ph.D. in Chemistry, 1982, University of Cincinnati

MS in Physics, 1978, University of Cincinnati

BS in Physics, 1976, University of Cincinnati (Summa Cum Laude)

**Experience:** 2013-2016, Part-Time Faculty, Physics & Geology, Northern Kentucky University

2005-2014, Visiting Professor, DeVry University, Cincinnati

2000-2003, Adjunct/Assistant Prof/Visiting Professor of Physics, Mathematics, Astronomy, ITT Technical Institute, Cincinnati

1996-2000, Technical Consultant, Mound Engineering & Analysis Group, Miamisburg

1982-1996, Analytical Specialist & Supervisor, EG&G Mound & Monsanto Research Corporation, Miamisburg, OH

1982-1985, Senior Physicist, Monsanto Research Corp. at EG&G Mound, Miamisburg

## MINI VITA

**Name:** Michael F. Collins

**Title:** Lecturer

**Education:** Rank I program, 1982, Northern Kentucky University

MS in Mathematics, 1976, Xavier University

BS in Mathematics, 1972, University of Kentucky

**Experience:** 2000-2013, Lecturer, Mathematics and Statistics, Northern Kentucky University

1977-2000, Part-Time Faculty, Mathematics, Statistics and Computer Science,  
Northern Kentucky University

1973–2000, Teacher, Mathematics and Computer Science, Simon Kenton High  
School

## MINI VITA

**Name:** Chrystal Culbertson

**Title:** Lecturer

**Education:** MA in Mathematics, 2005, Miami University

BS in Mathematics and Secondary Math Education, 2003, Pikeville College

**Experience:** 2008-2016, Lecturer of Mathematics and Statistics, Northern Kentucky University

2009-2011, GRE and GMAT Test Prep Instructor, Northern Kentucky University  
Community Connections

2007–2008, High School Mathematics Teacher, Powell County High School

2005–2007, High School Mathematics Teacher, George Rogers Clark High  
School

2003–2005 Teaching Assistant Miami University of Ohio

2000–2003 Peer Tutor Pikeville College

## MINI VITA

**Name:** Marla Lemmon

**Title:** Instructor

**Education:** MS in Mathematics, 2010, University of Cincinnati

BS in Mathematics, 2008, Northern Kentucky University

**Experience:** 2011-2016, Lecturer of Mathematics and Statistics, Northern Kentucky University

2010-2011, Adjunct Instructor of General Education, ITT Technical Institute  
(Norwood, OH campus)

2010, Adjunct Instructor of General Education, Beckfield College (Springdale,  
OH campus)

2008-2010, Teaching Assistant of Mathematics, University of Cincinnati



## MINI VITA

**Name:** Barbara Phillips

**Title:** Lecturer

**Education:** MA in Education, 2002, College of Mt. St. Joseph

Graduate Work in Education, 1997, University of Cincinnati

Graduate Work in Mathematics, 1982, Rice University

BA in Mathematics, 1981, Hanover College

**Experience:** 2004-2016, Lecturer of Mathematics, Northern Kentucky University

1990-2004, Instructor, University of Cincinnati

1989-2000, Instructor in the Development Department Cincinnati State College

1985-1989, Instructor of Mathematics, University of Missouri

1984-1985, Instructor of Mathematics University of North Carolina

1983-1984, Teacher, St. Pius School, Houston, TX

## MINI VITA

**Name:** Laura Urbanski

**Title:** Lecturer

**Education:** MS in Mathematics, 1992, Cleveland State University

BS in Mathematics Education, 1990, Bowling Green State University

**Experience:** 2008-2016, Lecturer of Mathematics, Northern Kentucky University

2005-2008, Instructor of Mathematics, University of Cincinnati Clermont College

1992-1997, Instructor of Mathematics, Miami University Middletown

## MINI VITA

**Name:** Amy Gillingham

**Title:** Lecturer

**Education:** D.M.A., 2010, Cello Performance Music Theory Cognate, University of Cincinnati College-Conservatory of Music

M.M., 2006, Cello Performance, University of Cincinnati College-Conservatory of Music

B.M., 2004, Cello Performance, North Carolina School of the Arts

**Experience:** 2013–present, Lecturer of Cello, Northern Kentucky University

2012–present, Director of NKU String Project, Northern Kentucky University

2011–present, Faculty, Music Preparatory Department, Northern Kentucky University

2000–present, solo, chamber, and orchestral performer 2012–2013, Adjunct Professor of Music, Northern Kentucky University

2011–2012, Instructor of Cello, Cincinnati Music Academy

2011–2012, Fine Arts Faculty, Indiana Wesleyan University

2009–2011, Instructor of Music Theory, University of Cincinnati College-Conservatory of Music

2007–2011, Instructor of Cello, Loveland Public Schools, Ohio

2005–2008, Instructor of Cello and Substitute Classroom Music Teacher, Cincinnati Hills Christian Academy

## MINI VITA

**Name:** Eleanor Danielle Todd

**Title:** Lecturer in Music Education

**Education:** Ph.D. in Progress in (ABD), Secondary Curriculum and Instruction; Music Education, The University of Alabama

MA in Educational Leadership, 2005, The University of Alabama

BSE in Music Educational-Instrumental, 2002, The University of Alabama

**Experience:** 2012-2016, Graduate Teaching Assistant, The University of Alabama

2015, Tuscaloosa Youth Orchestra Associate Conductor, (Fall Semester), The University of Alabama

2014, Sabbatical Replacement Instructor (Fall Semester), The University of Alabama

2012-2016, Private Studio, Trumpet Lesson Instructor, Tuscaloosa, Alabama

2006-2012, Director of Bands, Talladega City Schools; Talladega, Alabama

2002-2006, Director of Bands, Pell City Schools; Pell City, Alabama

## MINI VITA

**Name:** Daniel Lee Hunter

**Title:** Lecturer

**Education:** MS in Geology, 2011, University of Kentucky

BS in Geology, 2008, Northern Kentucky University

**Experience:** 2015-2016, Lecturer, Northern Kentucky University

2011-2015, Geosolutions Geophysicist, Schlumberger, Houston, TX

2010-2011, Field Geologist, Army Corps of Engineers, Nashville, TN

2008-2010, Research/Teaching Assistant, University of Kentucky

## MINI VITA

**Name:** Mohsen Keshtvarz (Mark Kesh)

**Title:** Lecturer

**Education:** Ph.D. in Progress (ABD), Industrial Engineering, University of Cincinnati

MS in Industrial Engineering, 1985, North Carolina A&T State University

BS in Mechanical Engineering, 1982, Jackson State University, Jackson, MS

**Experience:** 2010-2013, Assistant Professor of Engineering, Shiraz University, Shiraz, Fars

2000-2009, Full-time Lecturer of Computer Information Systems, University of Texas-El Paso

1995-2000, Assistant Professor of Computer Information Systems, Peru State College, Peru, NE

1988-1995, Assistant Professor of Information Technology, Wilmington College, Wilmington, OH

1987-1988, Assistant Professor and Director of Engineering Technology, Shawnee State University, Portsmouth, OH

1986-1987, Instructor of Computer Information Technology, Southern Ohio College Tech. Center, Cincinnati, OH

1981-1986, Senior Information Systems Engineer, Integrated Management Controls, Greensburg, PA

## MINI VITA

**Name:** Roger T. Miller

**Title:** Lecturer

**Education:** BS in Mechanical & Manufacturing Technology, Northern Kentucky University

**Experience:** 1989-2015, Production Specialist/Service Technician, HI-GEAR Co.

1986-1989, Machinist/Fabrication/Welder, TKF, Inc.

1985-1986, Machinist/Welder, RB Systems

1979-1985, Lead Fabricator/Assembler, H&L Manufacturing

## MINI VITA

**Name:** Jeffrey M. Girton

**Title:** Lecturer

**Education:** MS in Executive Leadership & Organizational Change, 2013, Northern Kentucky University

MA of Theology, 2005, Xavier University

BA, Kentucky Christian University

**Experience:** 2000-2016, Part-Time Faculty, Northern Kentucky University

2010-2014, Support Specialist, Student Achievement Programs & Services,

Northern Kentucky University

2006-2010, Residence Hall Director, Xavier University



## MINI VITA

**Name:** Smita Desai Ward

**Title:** Lecturer

**Education:** Ph.D. in Clinical Psychology, 1996, Purdue University

Psychology Internship/Post-Doctoral Work, 1994-1996

MS in Clinical Psychology, 1991, Purdue University

BA, 1987, Northern Kentucky University

**Experience:** 2012-2016, Lecturer, Northern Kentucky University

2005-2011, Clinical Psychologist at Alpine Clinic Medical Center

1995-2005, Post-Doctoral Work and Clinical Psychologist at Purdue University's Counseling and Psychological Services Center; Adjunct Faculty in Department of Psychological Science

1994-1995, Internship at Danville, Illinois VA Medical Center

## MINI VITA

**Name:** Eliah J. White

**Title:** Lecturer

**Education:** Ph.D. in Experimental Psychology, 2012, University of Cincinnati

MA in Psychology, 2008, University of Cincinnati

BA in Psychology, 2005, University of Cincinnati

**Experience:** 2012-2015, Adjunct Professor of Psychology, University of Cincinnati and  
University of Cincinnati Blue Ash

2012-2015, Freelance Data Analyst

## MINI VITA

**Name:** Gary Blahnik

**Title:** Lecturer

**Education:** Ph.D. in Humanities, 1989, Union Institute and University  
EdD in progress, Counseling, University of Cincinnati  
Med in Counseling, 2004, Xavier University  
MA in Philosophy, 2007, University of Cincinnati  
MA in English, 2006, Xavier University  
BA in Linguistics and Religion, 1975, California State University System

**Experience:** 1996-2016, Lecturer, Northern Kentucky University  
1994 –2016, Adjunct Professor, Xavier University  
1991-2016, Adjunct Professor, Union Institute and University

## MINI VITA

**Name:** Nicole Grant

**Title:** Lecturer

**Education:** Ph.D. in Sociology, 1989, State University of New York

MS in Sociology, 1985, State University of New York

BA in Sociology, 1983, State University of New York

**Experience:** 2002-2016, Lecturer of Sociology, Northern Kentucky University

1995-2002, Part-Time Faculty of Sociology, Northern Kentucky University &  
University of Cincinnati

1991-1995, Assistant Professor, Ball State University

1989-1991, Assistant Professor, Northern Kentucky University

1988-1989, Visiting Assistant Professor, Ramapo College of New Jersey

## MINI VITA

**Name:** Michael J. Simonton

**Title:** Lecturer

**Education:** Ph.D. in Social Anthropology, 2010, National University of Ireland-Galway  
MA in Anthropology, 1977, The Ohio State University  
BA in Anthropology, 1976, University of Dayton

**Experience:** 2001-2013, Lecturer of Anthropology, Northern Kentucky University  
2000-2001, Part-Time Faculty of Anthropology, Northern Kentucky University  
2008 -2013, Adjunct Assistant Professor of Anthropology, University of Cincinnati  
2000 -2013, Adjunct Professor of Sociology and Biology, Wilmington College Cincinnati Campus  
1985, Part-time Faculty of Anthropology, The Ohio State University, Marion Regional Campus  
1985, Part-time Faculty of Anthropology, Urbana University Dayton Campus  
1979- 1985, Graduate Teaching/Research Associate of Anthropology, The Ohio State University

## **MINI VITA**

**Name:** Kristina E. Vise

**Title:** Lecturer

**Education:** MA in Sociology, 2000, University of Cincinnati

BS in Applied Cultural Studies, 1998, Northern Kentucky University

**Experience:** 2007-2016, Lecturer, Northern Kentucky University

## **MINI VITA**

**Name:** Christine C. Jones

**Title:** Lecturer

**Education:** MFA in Acting, Drama, 1987, University of Virginia

BFA in Acting Performance, Florida State University

**Experience:** 2005-2016, Lecturer, Theatre Arts, Northern Kentucky University

## MINI VITA

**Name:** Chris Smith

**Title:** Lecturer

**Education:** BA, 1976, The Ohio State University

AA of Photography, 1984, Antonelli College

Sam Abell (National Geographic) Workshop, 1991

Maine Photographic Workshops, 1985

**Experience:** 2003-2016, Lecturer, Photography, Northern Kentucky University



## MINI VITA

**Name:** Jee Eun Lee

**Title:** Lecturer

**Education:** MFA in Sculpture, 2002, Ewha Womans University, Korea

MFA in Ceramics, 2013, Syracuse University

BFA in Sculpture, 1998, Ewha Womans University

**Experience:** 2016, Instructor, Ceramic Workshop in Syracuse Ceramic Guild

2013-2015, Instructor, Ceramics Department, Syracuse University

2013-2015, Instructor, Figure Sculpture, Syracuse University

2013-2015 Visiting Artist, Cicero North Syracuse High School

2013-2015 Visiting Artist, Raku Workshop, Baker High School, Baldwinsville, NY

2013-2014 Instructor, Drawing, Cazenovia College, New York

2000-2011 Teaching Assistant, Intermediate Ceramics, Syracuse University

2006, Instructor, 3D Foundation Program, Gwangju Womans University, Korea

2002, Instructor, Soehyun Academy of Art, Kyung-gi, Korea

## MINI VITA

**Name:** Andrea Fielner

**Title:** Lecturer

**Education:** Ph.D. in German Studies, 2009, University of Cincinnati

Certificate of Enhanced Pedagogy, 2006, University of Cincinnati

MA in German Studies, 2004, University of Cincinnati

**Experience:** 2014-2016, Lecturer, World Languages and Literatures, Northern Kentucky University

2012-2014, Part-Time Faculty, World Languages and Literatures, Northern Kentucky University

2012-2013, Advisor, Department of Psychological Science, Northern Kentucky University

2012, General Education Advisor, College of Arts and Sciences Advising Center, Northern Kentucky University

2012, Freelance Copyeditor for Dover Publications

2012, Adjunct Instructor, German, Department of German Studies, University of Cincinnati

2009-2010, Part-Time Faculty of German, Department of World Languages and Literatures, Northern Kentucky University

2010, General Education Advisor, College of Arts and Sciences Advising Center, Northern Kentucky University

2006, Assistant Coordinator, Department of German Studies, University of Cincinnati

2004-2005, Assistant Coordinator, Department of German Studies, University of Cincinnati

2003-2008, Teaching Assistant, Department of German Studies, University of Cincinnati

2000-2002, RWTH Aachen University, Germanistisches Institut, Germany

## MINI VITA

**Name:** Sandra Bazzani-Aronne

**Title:** Lecturer

**Education:** MA in Teaching Spanish as a Foreign Language, 2008, Fundación Universitaria Iberoamericana (FUNIBER), Universidad de León, Spain

BA in Venezuelan Legal Studies, 2001, Universidad Católica Andrés Bello, Caracas, Venezuela

**Experience:** 2016, Lecturer of Spanish, Northern Kentucky University

2015-2016, Part-Time Faculty, Spanish, Northern Kentucky University

2012-2016, Freelance Spanish Teacher, Procter and Gamble, Cincinnati, OH

2012-2016, Adjunct Instructor of Spanish, University of Cincinnati, Blue Ash

2009-2016, Adjunct Instructor of Spanish, Xavier University, Cincinnati, OH

2009-2010, Spanish Instructor, Berlitz Language Center, Cincinnati, OH

2003-2007, Spanish Teacher, Loyalist College, Belleville, ON, Canada

2003-2007, Freelance Spanish Teacher, Belleville, ON, Canada

## MINI VITA

**Name:** Mr. Anthony Burk

**Title:** Lecturer

**Education:** MS in Computer Information Technology, 2013, Northern Kentucky University  
BA in Accounting & Psychology (Double Major), 1979, Georgetown College

**Experience:** 2014-2016, Lecturer of Business Informatics, Northern Kentucky University  
2012-2014, Part-Time Faculty, Media Informatics, Northern Kentucky University  
2011-2012, Instructor of Psychology, University of Michigan  
2011-2013, Graphic Designer in the Center for Applied Informatics, Northern Kentucky University

## MINI VITA

**Name:** Ms. Sarah Mann

**Title:** Lecturer

**Education:** MEd in Instructional Technology, 2008, University of Louisville

BS in Organizational Systems Technology, 2006, Northern Kentucky University

**Experience:** 2015-2016, Senior Functional Consultant, Blackboard, Inc.

2008-2015, Director of Academic Technology, Northern Kentucky University

2007-2008, Director for eLearning Solutions, Kentucky Virtual Campus

2006-2016, Part-Time Faculty, Business Informatics, Northern Kentucky University

2002-2007, Online Educational Development Coordinator, Northern Kentucky University

2001-2002, Computer Lab Manager, Northern Elementary School Pendleton County Schools

## MINI VITA

**Name:** Ms. Crystal Summers

**Title:** Lecturer and Program Coordinator

**Education:** MS in Business Administration, 2012, Sullivan University

MS in Managing Information Technology, 2011, Sullivan University

MS in Health Informatics, 2009, Northern Kentucky University

BS in Business Education/Operating Systems Technology, 2004, Northern Kentucky University

**Experience:** 2010-2016, Lecturer of Business Informatics, Northern Kentucky University

2015, Instructor of Information Technology, Georgia Piedmont Technical and Community College

2012-2013, Instructor of Information Technology, Gateway Technical and Community College

2008-2013, Instructor of Information Technology, Chatfield College

## MINI VITA

**Name:** Mr. Bradley L. Metzger

**Title:** Lecturer

**Education:** MS in Operations Research, 1984, Georgia Institute of Technology

BS in Metallurgical Engineering, 1982, University of Cincinnati

**Experience:** 2015-2016, Lecturer of Business, Northern Kentucky University

1984-2015, Business Analytics & Business Intelligence System Development,  
Procter and Gamble Company

1986-1988, Instructor of Business Administration, University of Cincinnati

## MINI VITA

**Name:** Mr. Nicholas Brummer

**Title:** Lecturer

**Education:** MFA in Media Design, 2014, Full Sail University

BS in Media Informatics, 2011, Northern Kentucky University

BA in Studio Arts, 2011, Northern Kentucky University

**Experience:** 2014-2016, Part-Time Faculty, Media Informatics, Northern Kentucky University

2007-2016, Multi-Media Designer, NB Design

2014-2014, Instructional Designer, Linkbelt Cranes

2011-2013, Graphic Designer in the Center for Applied Informatics, Northern Kentucky University



## MINI VITA

**Name:** Ms. Michelle Crowley

**Title:** Lecturer

**Education:** MA in Communication, 2012, University of Cincinnati

BA in Theatre/Communication, 2010, Thomas More College

**Experience:** 2013-2016, Adjunct Professor of Communication, Cincinnati State and Technical College

2012-2016, Part-Time Faculty, Communication, Northern Kentucky University

2012-2016, Adjunct Professor of Communication, University of Cincinnati  
Clermont Campus

2011-2012, Assistant Individual Events Forensics Coach, University of Cincinnati

2011-2012, Graduate Teaching Assistant of Public Speaking, University of  
Cincinnati

## MINI VITA

**Name:** Mr. Thomas Streeter

**Title:** Lecturer

**Education:** MA in Communication, 1988, Stephen F. Austin State University

BA in Communication, 1985, Stephen F. Austin State University

**Experience:** 2011-2016, Consultant, TiER1 Performance Solutions

2010-2016, Proprietor, Crankybear Media

2009-2010, Information Technology Analyst, University of Cincinnati Office of Information Technologies Educational Services

2007-2009, Education Technology Specialist, Cincinnati Children's Hospital Medical Center

2006-2007, Application Specialist II, Cincinnati Children's Hospital Medical Center

2000-2006, Information Technology Analyst, University of Cincinnati of Information Technologies Educational Services

1997-2000, Assistant Professor of Electronic Media, University of Cincinnati

1995-1997, Adjunct Assistant Professor of Radio-TV, Temple University

1991-1995, Instructor of Radio-TV, University of North Carolina at Asheville

**RECOMMENDATION:**

That the attached non-academic personnel actions receive Board of Regents approval.

**BACKGROUND:**

The following categories of non-academic personnel actions which occurred between March 30, 2016 and, August 9, 2016 require approval by the Board of Regents:

1. Activations/Rehires
2. Reassignments, Reclassifications, Title/Status Changes, Promotions
3. Transfers
4. Contract/Temporary to Regular & Regular to Contract
5. Departures
6. Retirees
7. Administrative/Executive

# **ACTIVATIONS/REHIRES**

**03/30/16 – 08/09/16**

<b>NAME</b>	<b>DEPARTMENT</b>	<b>TITLE</b>	<b>EFF. DATE</b>
Al-Serhan, Serhan	Institutional Research	Analyst	08/01/2016
Alston, Robert	Student Conduct, Rights & Advocacy	Assistant Dean of Students	07/18/2016
Barclay, Kean	Men's Soccer	Assistant Coach	07/25/2016
Biddle, Brittany	Student Financial Assistance	Specialist	07/11/2016
Blasingame, Angela	Student Financial Assistance	Specialist	07/18/2016
Booker, Valerie	PP - Auxiliary Housing Facilities Mgmt.	Custodian	06/05/2016
Bowen, Eric	IT – Infrastructure & Operations Group	Technology Support Specialist II	06/13/2016
Bowlin, Kayla	Women's Basketball	Assistant Coach, Women's Basketball	05/23/2016
Carrier, Joshua	Women's Basketball	Assistant Basketball Coach	06/15/2016
Crabtree, Thomas	CRC Facility Management	Custodian	06/27/2016
Craddock, Anthony	CRC Facility Management	Custodian	07/07/2016
Creech, Tyler	Public Safety – Field Operations	Public Safety Officer	06/20/2016
Dansberry, Elizabeth	Residential Village	Residence Hall Director	07/08/2016
Drouillard, Caitlin	University Suites	Residence Hall Director	06/06/2016
Gabbard, Natalie	HR – Benefits Management	Analyst	05/31/2016
Graney, Stephanie	Office of the University Registrar	Coordinator, Processing	05/02/2016
Hendrickson, Dan	Office of the University Registrar	Coordinator, Service	05/02/2016
Hibbard, Ethan	Campus Recreation	Coordinator	06/10/2016
Jones, Kim	PP – Operations & Maintenance	Custodian	08/01/2016
Lane, Margaret	PP - Auxiliary Housing Facilities Mgmt.	Custodian	06/06/2016
Marimon, Nichole	IT-FI Business Support Group	Business Analyst, SAP Financial Systems	04/18/2016
Mize, Anthony	African American Programs & Services	Coordinator	07/05/2016
Morris, Timothy	Men's Basketball	Assistant Coach	04/23/2016
Owen, Nolan	Roads & Grounds	Groundskeeper	06/01/2016
Parker, Cara	Campus Recreation	Coordinator, Fitness	06/10/2016
Payne, Jonathan	Public Safety – Field Operations	Public Safety Officer	05/01/2016
Richardson, Whitney	Health, Counseling & Student Wellness	Staff Clinician	03/09/2016*
Shumate, Christopher	Men's Basketball	Assistant Coach	05/04/2016
Smith, Chloe	Athletics Communication	Assistant Director of Communication	08/01/2016
Smith, Sylvia	University Dev. & Alumni Relations	Administrative Specialist	05/31/2016
Southwick, Anita	Research, Grants & Contracts	Manager, Research Compliance	05/04/2016
Stine, Matthew	Women's Basketball	Assistant Coach, Women's Basketball	06/01/2016
Sullivan, Angela	Early Childhood Center	Teacher's Assistant	06/06/2016
Volker, Cassandra	Biological Sciences	Lab Technician	07/27/2016
Walsh, Lucas	University Development & Alumni Rel.	Assistant Director, Development & Alumni Engmt.	06/20/2016
Whited-Ford, Caleb	Campus Recreation	Coordinator, Campus Rec. Facilities	06/20/2016
Woods, Sarah	PP - Auxiliary Housing Facilities Mgmt.	Custodian	06/06/2016

**REASSIGNMENTS, RECLASSIFICATIONS, TITLE/STATUS CHANGES, PROMOTIONS**  
**03/30/16 – 08/09/16**

<b>NAME</b>	<b>DEPARTMENT</b>	<b>TITLE</b>	<b>STATUS</b>	<b>EFF. DATE</b>
Baker, Jeffrey	Environmental Safety and Compliance	Dir., Safety/Emergency Mgmt.	Reclassification	04/15/2016
Brewer, Meredith	Kentucky Center for Mathematics	Director	Reclassification	07/01/2016
Cucchiara, Gioacchino	Steely Library	Library Specialist	Reclassification	04/10/2016
Cucchiara, Sharon	Steely Library	Assistant to the Associate Provost	Reclassification	04/10/2016
Dawn, Karen	Operations & Maintenance	Administrative Specialist	Reclassification	06/19/2016
Dektas, Laura	Center for Student Inclusiveness	Administrative Assistant	Reclassification	07/03/2016
Foppe, Dave	IT – Infrastructure & Operations Group	System Analyst II	Reclassification	05/01/2016
Fox, Robert	Energy Management	Superintendent of Mech./Elect. Sys.	Reassignment	07/01/2016
Henderson, Cori	Institutional Research	Assistant Director - IR	Promotion	05/25/2016
Kelley, Sara	Legal Affairs & General Counsel	Associate General Counsel	Reclassification	05/01/2016
Kessinger, Whitney	Institutional Research	Assistant Director – IR	Reclassification	05/01/2016
Koenig, Tom	Facilities Management	Business Manager, Facilities	Reassignment	07/01/2016
Lanter, Rebecca	Energy Management	Director of Energy Management	Reassignment	04/01/2016
Martin, Jimmy	PP - Auxiliary Housing Facilities Mgmt.	General Maintenance Worker	Promotion	06/05/2016
Mozzocco, Elizabeth	WNKU Programming	Program Director, WNKU	Reclassification	03/38/2016*
Parker, Julia	Kentucky Center for Mathematics	Director	Reclassification	07/01/2016
Pearson, Nicholas	IT – Information Technology/Central	Senior Project Manager	Promotion	04/01/2016
Powers, Annamarie	Advancement Services	Prospect Researcher	Promotion	05/23/2016
Rainey, Shawn	Institutional Research	Associate Director – IR	Reclassification	04/25/2016
Scott, Larissa	PP – Operations & Maintenance	Custodian	Reassignment	08/01/2016
Shaul, Charles	HVAC/General Maintenance	Assistant HVAC Supervisor II	Promotion	03/28/2016*
Siddens, Cynthia	College Development	Director of Development, COEHS	Reclassification	07/01/2016
Webb, Kristy	University Police	Coord. Office Operations/Records	Reclassification	03/01/2016*
Wice, Toni	Administration & Finance	Division Business Officer	Reclassification	06/01/2016
Yahl, Brian	IT – Infrastructure & Operations Group	System Analyst II	Reclassification	05/01/2016

**TRANSFERS**  
**03/30/16 – 08/09/16**

<b>NAME</b>	<b>PREVIOUS DEPARTMENT</b>	<b>NEW DEPARTMENT</b>	<b>TITLE</b>	<b>EFF. DATE</b>
Brate, Theresa	College of Health Professions	Office of the University Registrar	Analyst, Business Processes	05/23/2016
Chambers, Christina	Residential Village	Residence Halls	Residence Hall Director	07/08/2016
Cowherd, Megan	Department of Nursing	Student Affairs	Division Business Officer	06/06/2016
Duncan, Justin	Center-Economic Analysis & Development.	Administration & Finance	Coordinator	05/02/2016
Elliott, Anna	Career Services	Undergraduate Academic Affairs	Assessment Analyst	08/01/2016
Maldonado, Diane	Latino Programs & Services	Inclusive Excellence	Asst. to Snr. Advisor	05/02/2016
Peek, Megan	Academic Affairs	Undergraduate Academic Affairs	Asst. to the Vice Provost	04/01/2016
Pena, Leyla	Admissions	Latino Programs & Services	Coordinator	07/26/2016
Smith, Steven	Student Financial Assistance	Institutional Research	Analyst	07/11/2016
Stooksberry, Jodi	Residence Halls	Callahan Residence Halls	Residence Hall Director	07/08/2016

**CONTRACT/TEMPORARY TO REGULAR & REGULAR TO CONTRACT**  
**03/30/16 – 08/09/16**

<b>NAME</b>	<b>DEPARTMENT</b>	<b>TITLE</b>	<b>STATUS</b>	<b>EFF. DATE</b>
Battistone, Samuel	College of Arts & Sciences	Advisor, Arts & Sciences	Temporary to Regular	06/13/2016
Fix, Thomas	Ctr. For Innovation & Tech. in Education	Manager/Instructional Design	Contract to Regular	06/06/2016
Hovekamp, Andrew	Informatics Advising Center	Advisor	Regular to Contract	08/08/2016
Sills, Kathryn	Student Financial Assistance	Team Leader	Student to Staff	05/16/2016
Stockman, Julianne	Center for Applied Informatics	Faculty	Staff to Faculty	08/01/2016
Stodola, Lauren	Women's Basketball	Director of Operations	Temporary to Regular	07/16/2016
Thompson, Kara	Informatics Advising Center	Advisor	Regular to Contract	08/04/2016
Wilkerson, David	Counseling, Social Work & Leadership	Faculty	Staff to Faculty	08/01/2016

**DEPARTURES**  
**03/30/16 – 08/09/16**

NAME	DEPARTMENT	TITLE	EFF. DATE
Adamczak, Karen	Parking Services	Parking Accounting Assistant	07/09/2016
Adryan, Christopher	WNKU-FM Radio	Sales Associate	05/24/2016
Anderson, Michael	Athletics Communication	Web Manager	07/01/2016
Arteno, Dominic	Roads & Grounds	Technician, Irrigation/Turf	07/07/2016
Axline, Robert	Athletic Marketing & Promotions	Coordinator, Athletic Marketing & Promotions	07/30/2016
Baioni, David	PP – Custodial Services	Custodian	06/04/2016
Belis, Christina	Ctr. Integrative Nat. Science & Math	Manager	04/09/2016
Chaney, Jeff	Men's Soccer	Assistant Coach	06/01/2016
Creech, Tyler	Public Safety – Field Operations	Public Safety Officer	06/21/2016
Dutle, Samantha	Norse Advising	Advisor	05/27/2016
Fails, Velisia	Student Financial Assistance	Specialist	04/16/2016
Flanigan, Gail	Business Operations & Auxiliary Services	Administrative Assistant	07/26/2016
French, Kenneth	Auxiliary Housing Facility Management	HVAC General Maintenance Mechanic	06/15/2016
Geberegeorgis, Yewineshet	African American Programs & Services	Coordinator	06/25/2016
Graham, Karmen	Women's Basketball	Assistant Coach, Women's Basketball	04/23/2016
Grothaus, Richard	Custodial Services - MC	Custodian	06/28/2016
Hall, Cassandra	PP – Custodial Services	Custodian	03/11/2016*
Hampton, David	IT – SLCM Business Support Group	Senior Business Systems Analyst	07/21/2016
Henderson, Malcolm	Norse Advising	Advisor	08/09/2016
Hollingsworth, Kelly	PP – Custodial Services	Custodian	05/07/2016
Horney, Philip	METS	Director	05/01/2016
Irby, Bryan	Public Safety – Field Operations	Public Safety Officer	06/10/2016
James, Stephanie	Sports Medicine & Performance	Assistant Athletic Trainer	07/01/2016
Jett, Michael	Custodial Services – MC	Floor Care Operator	07/01/2016
Jones, Kimberly	PP – Custodial Services	Custodian	05/21/2016
Kirchgassner, Rosa Maria	International Students & Scholars	Director of Development, COEHS	06/01/2016
Krugh, Emily	Educational Talent Search	Educational Advisor	07/30/2016
Liles, Phillip	Public Safety – Field Operations	Public Safety Officer	05/14/2016
Mangold, Brenda	PP – Custodial Services	Custodian	06/04/2016
Martin, Steve	Power Plant	EMS/HVAC Systems Specialist III	08/07/2016
Matthews, Carlos	CRC Facility Management	Custodian	05/07/2016
McClellan, Brigitte	PP – Custodial Services	Custodian	05/05/2016
McFarland, Jessica	CRC Facility Management	Custodian	04/08/2016
McGue, John	WNKU, Development & Marketing	Program Director	07/01/2016
Meier, Stephen	Student Conduct, Rights & Advocacy	Manager	07/01/2016

Meiser, Kelly	Office of Admissions	Specialist	06/04/2016
Merriss, Marshall	Veteran's Resource Station	Asst. Dir. Of Veteran Student Services	05/11/2016
Miller, Anthony	Computer Science	Academic Coordinator	08/13/2016
Mullins, Amanda	PP – Custodial Services	Lead Custodian	06/01/2016
Murray, Ashley	Student Financial Assistance	Specialist	07/14/2016
Nored, Ronald	Men's Basketball	Assistant Coach	04/16/2016
Peebles, Tina	Academic Affairs	Assistant to the Provost	07/23/2016
Perry, Nancy	University Development	Director, Planned Giving	07/01/2016
Plett, Lyndon	Women's Basketball	Assistant Basketball Coach	06/15/2016
Plitzuweit, Dawn	Women's Basketball	Head Coach	04/23/2016
Ragland, David	Men's Basketball	Assistant Coach	04/23/2016
Rhodes, Jessica	Sports Medicine & Performance	Assistant Athletic Trainer	07/01/2016
Ritter, Jeannie	LEAP	Specialist	04/01/2016
Rose, Russell	Women's Basketball	Assistant Coach	05/03/2016
Shipley, Frank	Sports Medicine & Performance	Associate Trainer – Athletics	07/01/2016
Singleton, Meredith	Office of Distance & Online Education	Associate Director	05/01/2016
Slone, Jessica	Office of Student Account Services	Student Account Services Representative	08/11/2016
Sok, Sopheap	Advancement Services	Prospect Research	07/30/2016
Stacy, Rodney	Laborers	Assistant Supervisor	05/21/2016
Steffen, Kathryn	Nursing	Secretary	05/21/2016
Steller, Jeffrey	Biological Sciences	Lab Technician	06/27/2016
Tillett, Stanley	METS	Manager, Client Services	05/01/2016
Ullrich, Nicholas	Institutional Research	Analyst	04/30/2016
Von Handorf, Rosanne	Campus Space & Planning	Specialist	04/02/2016
Wells, Zachary	Educational Talent Search	Assistant Director	07/30/2016
Woods, Diane	Student Financial Assistance	Coordinator	05/28/2016
Woods, Molly	Sports Medicine & Performance	Associate Director	08/06/2016

**RETIREES**  
**03/30/16 – 08/09/16**

<b>NAME</b>	<b>DEPARTMENT</b>	<b>TITLE</b>	<b>EFF. DATE</b>
Albert, Linda	Norse Advising	Senior Advisor	06/01/2016
Behrens, Connie	Graduate Education	Specialist	08/01/2016
Beirne, Carol	Alumni Relations	Assistant Director	07/01/2016
Dejaco, Peggy	Operations & Maintenance	Coordinator	08/01/2016
Snow, Melody	IT – Infrastructure & Operations Group	Lead Technology Support Specialist I	04/30/2016



**ADMINISTRATIVE/EXECUTIVE**  
**03/30/16 – 08/09/16**

<b>NAME</b>	<b>DEPARTMENT</b>	<b>TITLE</b>	<b>REASON</b>	<b>EFF. DATE</b>
Brewer, Charita	College of Arts & Sciences	Dir. Of Admin, Planning & Budget	Separation	07/02/2016
Gates, Joan	Legal Affairs & General Counsel	VP Legal Affairs/General Counsel	New Hire	07/18/2016
Kachurek, Leslie	University Police	Chief of Police/Campus Security	Separation	07/30/2016
Moore, Dannie	Center for Student Inclusiveness	Assistant VP, Student Affairs	Reclassification	05/06/2016
Nadler, Daniel	Student Affairs	Vice President of Student Affairs	New Hire	07/18/2016
Sidebottom, Sara	Legal Affairs & General Counsel	VP Legal Affairs & General Counsel	Retirement	07/29/2016
Sullivan, Karen	Administration & Finance	Director of Administration	Separation	07/02/2016
Turner, Kimberley	Student Affairs	Asst. VP, Student Engagement & Bus. Ops	Separation	06/01/2016
Whitaker, Camryn	Women's Basketball	Head Coach	New Hire	05/06/2016

**\*Not on previous report**

**RECOMMENDATION:**

The Board of Regents officially hereby accepts contributions totaling **\$414,459.00** received by the NKU Foundation Inc. for the benefit of Northern Kentucky University during the period April 01, 2016 through June 30, 2016 per the below list.

**BACKGROUND:**

At the March 12, 2014 Board Meeting, a major gift policy was approved by the Regents raising the level of major gifts submitted for review and acceptance by the Board to \$25,000. This recommendation includes major contributions of \$25,000 or more for the designated period.

**Contributions of \$25,000 or Greater (04/01/16-06/30/2016)**

<b>Donor Name</b>	<b>Date</b>	<b>Gift Designation</b>	<b>Cash</b>	<b>Pledge</b>	<b>In-Kind/Other</b>	<b>Totals</b>
Sylvia Hendon	4/19/2016	Judge Sylvia Sieve Hendon Endowed Scholarship	\$0.00	\$25,000.00	\$0.00	\$25,000.00
Ellen Rieveschl	4/27/2016	Steely Library	\$0.00	\$0.00	\$64,459.00 (donation of books from private library)	\$64,459.00
John J. and Mary R. Schiff Foundation	4/20/2016	NKU Fund for Excellence	\$25,000.00	\$0.00	\$0.00	\$25,000.00
Carol J. Swarts	4/19/2016	Frank S. Milburn & Dr. Carol J. Swarts Award for Innovative Research & Creativity	\$0.00	\$25,000.00	\$0.00	\$25,000.00
D. L. Cordray	5/16/2016	Lee Cordray Endowed STEM Scholarship	\$0.00	\$25,000.00	\$0.00	\$25,000.00

<b>Donor Name</b>	<b>Date</b>	<b>Gift Designation</b>	<b>Cash</b>	<b>Pledge</b>	<b>In-Kind/Other</b>	<b>Totals</b>
Duke Energy Foundation	5/20/2016	Next Generation STEM Classroom Project	\$75,000.00	\$0.00	\$0.00	\$75,000.00
Timothy E. Eble	06/01/2016	Chase College of Law	\$0.00	\$0.00	\$25,000.00 (contribution of travel vouchers)	\$25,000.00
Kevin Rush	06/03/2016	Kim Turner Family Award	\$0.00	\$25,000.00	\$0.00	\$25,000.00
Chase College Foundation	06/23/2016	Chase Foundation Scholarships	\$70,000.00	\$0.00	\$0.00	\$70,000.00
Tyson Foods	06/27/2016	Tyson Scholarship	\$0.00	\$25,000.00	\$0.00	\$25,000.00
Charles H. Brown	06/30/2016	Sadie Brown Endowed Scholarship	\$0.00	\$30,000.00	\$0.00	\$30,000.00
<b>TOTAL</b>			<b>\$170,000.00</b>	<b>\$155,000.00</b>	<b>\$89,459.00</b>	<b>\$414,459.00</b>

**RECOMMENDATION:**

The Board of Regents hereby approves the following naming actions:

- (1) The naming of a scholarship in support of students who demonstrate academic achievement and financial need with preference for students who are members in good standing of the Delta Zeta Sorority organization “The David and Linda Allen NKU Endowed Scholarship”.
- (2) The naming of a scholarship in support of students who are pursuing fields of study in the biological sciences or are pre-med track eligible and who demonstrate academic achievement and financial need “The Dr. Robert and Dolores Lorenz Scholarship in Biological Science”.
- (3) The naming of an endowed scholarship in support of students who opt to further their theoretical and empirical knowledge regarding social justice issues through the pursuit of a minor in social justice studies “The Connie & Firmin Widmer Endowed Scholarship in Social Justice”.
- (4) The naming of an endowed scholarship in support of students enrolled in Chase College of Law “The Judge Sylvia Sieve Hendon Endowed Scholarship”.
- (5) The naming of an endowed scholarship in support of undergraduate students from the West African nation of Mauritania with preference given to students who have extracurricular involvement with the Nouakchott Kings Soccer Academy in Nouakchott, Mauritania “The Yacoub A. Sidya Endowed Scholarship”.
- (6) The naming of a financial aid award in support of NKU students who are also single parents “The Kim Turner Family Award”.
- (7) The naming of an endowed scholarship in support of Kentucky students pursuing studies in science, technology, engineering or mathematics (STEM) fields “The Lee Cordray Endowed STEM Scholarship”.

**BACKGROUND:**

Naming actions in connection with private gifts are governed by NKU Administrative Regulation-II-4.0-2, section 2.2. NKU’s Naming Policy provides for naming opportunities in consideration of a major contribution to the university. The policy allows flexibility in determining the level of contribution appropriate for each naming action, enabling each gift to be judged on its own merit.

After careful consideration by university officials and unanimous support by the University Naming Committee, it was recommended to offer the following naming recognitions.

- (1) The university has received a major gift commitment in support of students who demonstrate academic achievement and financial need with preference for students who are members in good standing of the Delta Zeta Sorority organization.

Donor: David and Linda Allen  
Naming Gift: \$35,400.45  
Naming: The David and Linda Allen NKU Endowed Scholarship

Over the past 26 years Linda Allen, (1978/BS Accounting/Economics; 1984/MBA) achieved career success at Procter & Gamble, most recently serving as finance director, corporate acquisitions. In that position, she led financial planning and management for one of the area's Fortune 500 firms. A recipient of the 1997 Outstanding NKY Woman of the Year award, Linda is also the recipient of the 2007 Haile/US Bank College of Business Outstanding Alumna award.

David Allen, also a 1978 Business/Economics graduate, has been a programmer for 30 plus years, most recently with US Bank but also for R.L. Polk and Federated Department Stores.

(2) The university has received a major gift commitment in support of students who are pursuing fields of study in the biological sciences or are pre-med track eligible and who demonstrate academic achievement and financial need.

Donor: Dr. Robert and Dolores Lorenz  
Naming Gift: \$25,000  
Naming: The Dr. Robert and Dolores Lorenz Scholarship in Biological Science

Robert Lorenz earned a bachelor's degree in philosophy and theology from St. Pius X Seminary but then determined he wanted to pursue a medical degree. He attended NKU, obtained the necessary pre-med courses, and with the assistance of Dr. Larry Giesmann became the first NKU student to obtain admission to medical school. He graduated from the University of Kentucky College of Medicine and went on to become a pulmonologist eventually joining St. Elizabeth Healthcare after many years in private practice. Bob and Dee Lorenz have been strong supporters of NKU's Department of Biological Sciences who honored him with the Distinguished Alumni Award in 2015.

(3) The university has received a major gift commitment in support students who opt to further their theoretical and empirical knowledge regarding social justice issues through the pursuit of a minor in social justice studies.

Donor: Connie & Firmin Widmer  
Naming Gift: \$25,000  
Naming: The Connie & Firmin Widmer Endowed Scholarship in Social Justice

Connie Widmer, Professor of Education, taught in the College of Education and Human Services both full and part time from 1975 to 2015. She and her husband, Firmin, were grateful that the College created the minor in Social Justice and to show their appreciation they have also established an estate gift to further support the Connie and Firmin Widmer Endowed Scholarship in Social Justice.

(4) The university has received a major gift commitment in support of students enrolled in Chase College of Law.

Donor: Judge Sylvia Sieve Hendon  
Naming Gift: \$25,000  
Naming: The Judge Sylvia Sieve Hendon Endowed Scholarship

Judge Hendon received her B.A., cum laude, from Edgecliff College (Xavier University), in 1965 and her J.D., from Salmon P. Chase College of Law in 1975. After three years of private practice Judge Hendon was appointed as Referee in the Hamilton County Juvenile Court serving from 1979 through 1983 – the last year she served as Chief Referee. She was elected to the Hamilton County Municipal Court bench in November 1983 where she served for ten years – her last two years as Administrative and Presiding Judge.

In January 1993 she was appointed to the Juvenile Court bench – serving as Presiding Judge from 1998 through November 2004. Judge Hendon was elected to the First District Court of Appeals in November 2004 – serving as Presiding Judge in 2009. She is one of only two sitting judges to have served as Presiding Judge in all three levels of court. She has also served by appointment on the Ohio Supreme Court.

Judge Hendon also served as President of the Chase Law School Alumni as well as President of the Edgecliff College Alumni. She is currently a Trustee for the UC Healthcare System and Xavier University and sits on the Advisory Boards to the Chase Law School Center for Excellence in Advocacy.

(5) The university has received a major gift commitment in support of undergraduate students from the West African nation of Mauritania.

Donor: Yacoub A. Sidya

Naming Gift: \$25,000

Naming: The Yacoub A. Sidya Endowed Scholarship

Yacoub played soccer for NKU in 2001-02. A native of Mauritania, he seeks to provide youth from his native country the opportunity to pursue an undergraduate degree, particularly those with a passion for the game of soccer.

(6) The university has received a major gift commitment in support of NKU students who are also single parents.

Donor: Kevin Rush

Naming Gift: \$25,000

Naming: The Kim Turner Family Award

This gift was made in honor of Kim Turner, NKU's former Interim Vice President for Student Affairs. Kim is a 2000 NKU graduate; she also holds a M.A. in Higher Education Administration from the University of Louisville and a M.B.A. from Morehead State University. The endowment will be used to help single parents by providing a helping hand when financial burdens may lead to a student postponing their pursuit of a NKU degree.

(7) The university has received a major gift commitment in support of Kentucky students pursuing studies in science, technology, engineering or mathematics (STEM) fields.

Donor: D.L. Cordray

Naming Gift: \$25,000

Naming: The Lee Cordray Endowed STEM Scholarship

Lee Cordray is a 1973 graduate who majored in sociology. She is a retired area manager for the Kentucky Department of Employment Services. She received the "1996 Retiree of the Year" award from the Kentucky Chapter of the International Association of Personnel in Employment Security (IAPES). This is the second endowed scholarship Mrs. Cordray has established for NKU students, both of which seek to support female students who, as she did while a NKU student, juggle degree completion and raising a family.

**RECOMMENDATION:**

That Emeritus status for the following individuals receives Board of Regents approval:

**Dr. Paul Bishop**, associate professor in the Department of Psychological Science, effective May 15, 2016.

**Dr. John Filaseta**, associate professor in the Department of Physics, Geology and Engineering Technology, effective January 1, 2016.

**Dr. Jon Hastings**, professor in the Department of Biological Sciences, effective May 15, 2016.

**Dr. Debra Pearce**, professor in the Department of Biological Sciences, effective May 15, 2016.

Mini Vitas Follow

**BACKGROUND:**

The faculty members recommended for Emeritus status have received the endorsement of the faculty, the dean, the provost, and the president.



## MINI VITA

**Name:** Paul Douglas Bishop

**Title:** Associate Professor

**Education:** Ph.D. in Experimental and Clinical Psychology, 1972, Dual Degree, Ohio University

MS in Psychology, 1968, Ohio University

BA in Psychology, 1965, Lewis and Clark College

**Experience:** 1981-2015, Associate Professor of Psychological Science, Northern Kentucky University

1975-1981, Assistant Professor of Psychology, Northern Kentucky University

1996-2000, Director of Human Sexuality Program, University of Cincinnati Medical School

1982-1984, Clinical Psychologist, Comprehensive Care Treatment Program for Drug and Alcohol Addiction, Falmouth Kentucky

1980, Staff Psychologist, Kinsey Institute Summer Training Program in Human Sexuality

1979, Staff Psychologist, Syracuse University Summer Training Program in Human Sexuality

1972-2010, Part time Private Practice in Clinical Psychology, Kentucky and Ohio

1972-1975, Adjunct Assistant Professor, Department of Psychology, University of Cincinnati

1972-1975, Clinical Psychologist, Rollman's Psychiatric Institute

## MINI VITA

**Name:** John E. Filaseta

**Title:** Associate Professor

**Education:** Ph.D. in Physics, 1987, University of Illinois

MS in Physics, 1980, University of Illinois

BS in Physics, 1979, University of Arizona

**Experience:** 1992-2016, Associate Professor, Department of Physics, Geology and Engineering Technology, Northern Kentucky University

2009-2013, Chair, Department of Physics and Geology, Northern Kentucky University

1993, Interim Chair, Department of Physics and Geology, Northern Kentucky University

1987-1992, Assistant Professor, Department of Physics and Geology, Northern Kentucky University

1986-1987, Lecturer, Department of Physical Sciences, Northern Kentucky University

## MINI VITA

**Name:** Jon Michael Hastings

**Title:** Professor

**Education:** Ph.D. in Physiological and Behavioral Ecology, 1985, University of Mexico

MS in Population Biology and Physical Anthropology, 1975, University of Mexico

BA in Biology, 1971, Kent State University

**Experience:** 2000-2016, Professor, Biological Sciences, Northern Kentucky University

1992-2000, Associate Professor, Biological Sciences, Northern Kentucky University

1987-1992, Assistant Professor, Biological Sciences, Northern Kentucky University

## MINI VITA

**Name:** Debra K. Pearce

**Title:** Professor

**Education:** Ph.D. in Biochemical Nutrition, 1976, University of California

BS in Biochemistry, 1971, University of California

BA in Sociology, 1983, State University of New York

**Experience:** 1993-2016, Professor, Biological Sciences, Northern Kentucky University

2005-2013, Chair, Department of Biological Sciences, Northern Kentucky University

2003-2004, Interim Chair, Department of Biological Sciences, Northern Kentucky University

1981-1993, Associate Professor, Biological Sciences, Northern Kentucky University

1976-1981, Assistant Professor, Biological Sciences, Northern Kentucky University

**RECOMMENDATION:**

That the Emergency Management (EM) graduate certificate in the College of Arts and Sciences, as outlined in the accompanying proposal, be approved for initiation at the beginning of the 2016 fall semester.

**BACKGROUND:**

The College of Arts and Sciences developed the proposed graduate certificate program, Emergency Management (EM), to help address the need for more professionals who are trained to prepare for, manage, and lead during disasters and other crises in the Northern Kentucky/Greater Cincinnati region and beyond. Emergency management positions are increasingly being created not only in local, state, and federal government agencies but also in universities, schools, hospitals, nonprofit organizations, and private businesses. The EM graduate certificate will provide knowledge and skills for managing and leading in the emergency management field to existing fire fighters, police officers, and other first responders as well as to individuals with a goal of working in this field.

The proposed graduate certificate requires eighteen (18) credit hours, which can be completed in one year or more. Students will have the option of completing the certificate completely online or in a mixed delivery manner. These options are particularly appealing to individuals currently working in emergency management and public safety because their schedules often make it challenging to attend traditional class meetings.

The EM certificate program does not require new faculty or new courses. The Master of Public Administration (MPA) program has offered an area of concentration in Homeland Security and Emergency Management for years, so the courses needed to earn the EM certificate are currently offered on a regular basis. Students may choose to earn the EM certificate in combination with the MPA degree.

**RECOMMENDATION:**

That the Board of Regents endorses the tuition and mandatory fee rates for the Nurse Anesthesia Program (NAP) at the rates proposed below. This is a graduate program so these rates do not need Council on Postsecondary Education approval. The NAP program starts Spring 2017.

This recommendation details NKU's proposed NAP tuition rates for the 2016-17 academic year.

**BACKGROUND:**

The Nurse Anesthesia Program (NAP) is a specialization in the Doctor of Nursing Practice (DNP) program in the College of Health Professions (CHP). The program is designed to be a 36 month (106 semester credit hours) curriculum culminating in a Doctor of Nursing Practice (DNP) with a population focus of the family/individual across a lifespan. Graduates will be eligible for the National Board of Certification and Recertification of Nurse Anesthetists, National Certification Exam and to assume the role of an Advanced Practice Registered Nurse as a Certified Registered Nurse Anesthetist (CRNA).

**PROPOSAL:** Establish the following tuition and fee rates for the NAP program.

**TUITION**

		<b>Resident</b>	<b>Non Resident</b>
<b>Semester</b>	<b>Credit Hours</b>	<b>Semester Tuition</b>	<b>Semester Tuition</b>
Summer 1	14	\$10,038	\$12,838
Fall 1	15	\$10,755	\$13,755
Spring 1	13	\$9,321	\$11,920
<b>Annual Total</b>	<b>42</b>	<b>\$30,114</b>	<b>\$38,513</b>
Summer 2	13	\$9,321	\$11,921
Fall 2	13	\$9,321	\$11,921
Spring 2	10	\$7,170	\$9,170
<b>Annual Total</b>	<b>36</b>	<b>\$25,812</b>	<b>\$33,012</b>
Summer 3	11	\$7,887	\$10,087
Fall 3	9	\$6,453	\$8,253
Spring 3	8	\$5,736	\$7,336
<b>Annual Total</b>	<b>28</b>	<b>\$20,076</b>	<b>\$25,676</b>
<b>PROGRAM TUITION TOTAL</b>	<b>106</b>	<b>\$76,002</b>	<b>\$97,201</b>

Tuition Per Credit Hour

KY Resident \$717

Non-Resident \$917

Students in the following counties in OH will be charged the KY Resident Rate: Adams, Brown, Butler, Champaign, Clark, Clermont, Clinton, Darke, Delaware, Fairfield, Fayette, Franklin, Greene, Hamilton, Highland, Licking, Madison, Miami, Montgomery, Pickaway, Pike, Preble, Scioto, Ross, Union, Warren

# **ONE-TIME FEES - ALL STUDENTS**

Online Course Fees (\$40 x 34 CNP Core Courses)	\$1,360
Clinical Access Fee (\$225 x 32 lab credit hours)	\$7,200
Computer Program Access (Typhon \$100)(Prodigy \$400)	\$500
Simulation Lab Fee \$500 per semester	\$4,500
Testing SEE	\$270
Matriculation Fee (Applied to tuition if matriculate into prog-otherwise it's forfeited)	\$1,000
Application Fee	\$55
Certified Background	\$112
Renewal BLS, ACLS, PALS Certification	\$350
Renewal RN Licenses in KY \$165 and OH \$75	\$240
Graduation Fee	\$50
Professional Meeting	\$150
Parking	\$681
Books for the entire program	\$2,900
Professional Membership (AANA)	\$200
National Certification Exam	\$750
Lab Coat and/or Warm up Jacket	\$150
Liability Insurance (\$17 x 4 years)	\$68
<b>TOTAL ONE-TIME FEES</b>	<b>\$20,536</b>
<b>TOTAL PROGRAM COSTS</b>	<b>\$96,538</b>
	<b>\$117,737</b>

**RECOMMENDATION:**

That the attached organizational chart receives the Board of Regents approval.

**BACKGROUND:**

The attached organizational chart reflects all NKU Administrative updates through September 8, 2016. The reporting lines listed are for Director level and above, but include; individuals who directly report to the President; Department Chairs under Academic Affairs; Coaching areas under Intercollegiate Athletics; and the Manager of the Bookstore/Barnes & Noble and Food Services/Chartwells, which are separate entities from the University.



# NORTHERN KENTUCKY UNIVERSITY ORGANIZATIONAL STRUCTURE<sup>1</sup>

## BOARD OF REGENTS

Richard Boehne (Chair), William L. Scheben (Vice Chair), Virginia G. Fox (Secretary), Richard L. Boyce, Normand Desmarais, Terry L. Mann, Dennis Repenning, Gregory Shumate, Arnie D. Slaughter, Andr  R. Ward, John William Weber

## PRESIDENT

Geoffrey S. Mearns

Executive Assistant to the President/Secretary to the Board of Regents: (vacant)

Assistant to the President: Tammy Knochelmann

### Administration and Finance

Senior Vice President  
Sue Hodges Moore

#### Business Operations and Auxiliary Services

Director  
Andy Weeks  
All Card Administration  
Ward Wenstrup  
BB&T Arena  
Darren Stearns  
Bookstore/Barnes & Noble  
Elaine Perkins  
Food Services/Chartwells  
Pat Hannan  
Mail Services/Copy Center  
Kevin Russell  
Parking Services  
Curtis Keller

#### Chief Financial Officer / Treasurer

Michael Hales  
Budget Office  
Angela Schaffer  
Office of the Comptroller  
Comptroller  
Russ Kerdolff  
Student Account Services  
Kim Graboskey  
Procurement Services  
Jeff Strunk

#### Facilities Management

Assistant Vice President  
Syed Zaidi  
University Architect, Design & Construction Management  
Steve Nienaber  
Campus and Space Planning  
Mary Paula Schuh  
Operations and Maintenance  
Raymond Mirizzi  
Real Property Development  
James Kaufman  
Safety and Emergency Management  
Jeffrey Baker  
Sustainability and Energy Management  
Rebecca Lanter

#### Human Resources

Senior Director  
Lori A. Southwood  
HR Operations  
(vacant)  
Benefits  
Emily Sumner  
Compensation and Classification  
Josie Kondaveeti  
Employee Relations & EEO  
Rachel Green  
Training & Development  
Martha Biederman  
Payroll  
Cathy Wisher  
Wellness  
Kim Baker

#### Information Technology

Chief Information Officer  
Timothy Ferguson  
Infrastructure and Operations  
(vacant)  
Enterprise Systems Group  
Don Stinson  
Program & Project Management  
Bert Brown

#### Institutional Research

Assistant Vice President  
Vickie Natale

#### Planning and Performance

Assistant Vice President  
Vickie Natale

### Academic Affairs

Provost and Executive Vice President  
Sue Ott Rowlands

Associate Provost for Administration  
Beth A. Sweeney

Assistant Provost for Special Projects  
Joel Robinson

#### Chase College of Law

Dean  
Jeffrey Standen  
Associate Dean, Academics  
Lawrence Rosenthal  
Associate Dean, Administration & Law Library  
Michael Whiteman  
Associate Dean, Advancement  
David MacKnight  
Associate Dean, Faculty Development  
Michael Mannheimer

#### College of Arts & Sciences

Dean  
Diana McGill (Interim)  
Senior Associate Dean  
Gail Mackin  
Associate Dean  
John Alberti  
Assistant Dean  
Amy Racke  
Advising Center  
Amy Racke  
Biological Sciences  
Patrick Schultheis (Interim)  
Center for Integrative Natural Science and Mathematics - CINSAM  
Madhura Kulkarni (Interim)  
Chemistry  
Keith Walters  
English  
Emily Detmer-Goebel  
History and Geography  
Burke Miller  
Kentucky Center for Mathematics  
Daniel McGee  
Mathematics & Statistics  
Roger Zarnowski  
Physics, Geology and Engineering Technology  
Michael Roth  
Political Science, Criminal Justice & Organizational Leadership  
Shamima Ahmed  
Psychological Science  
Jeffrey Smith  
School of the Arts  
Ken Jones  
Sociology, Anthropology & Philosophy  
Sharyn Jones  
World Languages and Literatures  
Caryn Connelly

#### Haile/US Bank College of Business

Dean  
Rebecca Porterfield  
Associate Dean  
Greg Martin  
Assistant Dean  
Leslie Kyle  
Accounting & Business Law  
Robert Russ  
Advising Center  
Leslie Kyle  
Alternative Dispute Resolution Center  
Kathleen Carnes  
Center for Economic Analysis and Development  
Janet Harrah  
Center for Economic Education  
Abdullah Al-Bahrani  
Center for Innovation & Entrepreneurship  
Rodney D'Souza  
Economics and Finance  
John Thompson  
Management  
Tracey Sigler  
Marketing Research Partnership Program  
Aron Levin  
Marketing, Sports Business & Construction Management  
Doris Shaw  
Masters - Accountancy  
Darius Fatemi  
Masters - Business Administration  
Sandra Spataro  
Masters - Executive Leadership and Organizational Change  
(vacant)  
Small Business Development Center  
Rebecca Volpe

#### College of Education and Human Services

Dean  
Cynthia Reed  
Associate Dean  
Carol Ryan  
Advising Center  
Anna Stryker  
Center for Educator Excellence  
Sara Runge  
Counseling, Social Work and Leadership  
Verl Pope  
Institute for Talent Development and Gifted Studies  
(vacant)  
Kinesiology and Health  
Alar Lipping  
Teacher Education  
Roland Sintos Coloma  
Training and Development Center  
David Wilkerson

#### College of Health Professions

Dean  
Dale Scalise-Smith  
Associate Dean  
David Tatar  
Assistant Dean  
(vacant)  
Advanced Nursing Studies  
Adrianne Lane  
Advising Center  
(vacant)  
Allied Health  
(vacant)  
Northern Kentucky Nursing and Interprofessional Research Collaborative  
Kimberly McLane  
Nurse Advocacy Center for the Underserved  
Mary Kishman  
Nursing  
Mary Kishman

#### College of Informatics

Dean  
Kevin Kirby  
Associate Dean  
Stephen Yungbluth  
Advising Center  
Rebecca Walker (Interim)  
Business Informatics  
Frank Braun  
Center for Applied Informatics  
Jill Henry  
Communication  
Zachary Hart  
Computer Science  
Maureen Doyle (Interim)

#### Center for Global Engagement and International Affairs

Executive Director  
Francois LeRoy  
American English Language Program  
David Gutmann  
Education Abroad  
Francois LeRoy  
International Student and Scholar Services  
Samba Dieng

#### Graduate Education, Research and Outreach

Vice Provost  
Samantha Langley-Turnbaugh  
Community Connections  
Melinda Spong  
Center for Environmental Restoration  
Scott Fennell  
Ecological Stewardship Institute  
(vacant)  
Graduate Education  
Christian Gamm  
Research, Grants, and Contracts  
Mary Ucci (Interim)  
Scripps Howard Center for Civic Engagement  
Mark Neikirk

### Inclusive Excellence

Senior Advisor  
Kathleen Roberts

### Intercollegiate Athletics

Director of Athletics  
Ken Bothof

#### Administration

Academic Services  
Assistant Athletic Director  
Debbie Kirch  
Business & Finance  
Senior Associate Athletic Director  
Dan McIver  
Communications & Media Relations  
Assistant Athletic Director  
Bryan McEldowney  
Compliance & Student-Athlete Services  
Associate Athletic Director / Academics / SWA  
Leslie Fields  
Marketing, Promotions and Ticketing  
Assistant Athletic Director  
Brandon Hayes  
Operations & Event Management  
Associate Athletic Director  
Chris Hafling  
Sports Medicine & Risk Management  
Associate Athletic Director  
Molly Hutson

#### Sport Programs

Men's Baseball  
Todd Asalon  
Men's Basketball  
John Brannen  
Women's Basketball  
Camryn Whitaker  
Men's & Women's Cross Country / Track & Field  
Steve Kruse  
Men's & Women's Golf  
Daryl Landrum  
Men's Soccer  
John Basalyga  
Women's Soccer  
Bob Sheehan  
Women's Softball  
Kathryn Gleason  
Men's & Women's Tennis  
Brian Nester  
Women's Volleyball  
Liz Hart

#### Learning Sciences and Technology / Steely Library

Associate Provost and Dean  
Arne Almquist  
Associate Dean  
Lois Schultz  
Associate Dean  
Robert Zai  
Academic Technology Group and CITE  
Jeff Chesnut (Interim)  
Grant County Center  
Correy Eimer

#### Undergraduate Academic Affairs

Vice Provost  
Idna Corbett  
Assistant Vice Provost  
(vacant)  
First Year Programs  
Jeanne Pettit  
Honors Program  
Belle Zembradt (Interim)  
Learning Plus  
Diane Williams  
Norse Advising  
J. Patrick Moynahan  
PACE  
Debbie Poweleit  
Testing Services  
Amy Danzo

### Legal Affairs and General Counsel

Vice President  
Joan Gates

Associate General Counsel  
Sara B. Kelley

#### Compliance and Institutional Ethics

Compliance Officer  
Dawn Bell-Gardiner

#### Financial and Operational Auditing

Director  
Larry Meyer

### Student Affairs

Vice President  
Dan Nadler

#### Student Engagement & Dean of Students

Assistant Vice President  
Arnie Slaughter (Interim)  
Campus Recreation  
Matthew Hackett  
Early Childhood Center  
Melanie Caldwell  
Fraternity and Sorority Life  
Kim Vance  
Student Engagement  
Tiffany Mayse  
Student Union and Programming  
Sarah Aikman  
University Housing  
Arnie Slaughter

#### Outreach Services

Assistant Vice President for Student Affairs (Ombudsman)  
Dannie Moore  
Educational Talent Search  
Lisa Brinkman  
Health, Counseling and Student Wellness  
Ben Anderson  
Upward Bound  
Eric Brose

#### The Center for Student Inclusiveness

Assistant Vice President for Student Affairs (Ombudsman)  
Dannie Moore  
African American Programs and Services  
Tracy Stokes  
Disability Programs and Services  
Cindy Knox  
Latino Programs and Services  
Leo Calderon  
LEAP  
Amanda Johnson  
LGBTQ Programs and Services  
Bonnie Meyer  
Norse Violence Prevention Center  
Gabby Malony

#### Student Conduct, Rights and Advocacy

Senior Associate Dean and Director of Conduct, Rights and Advocacy  
Ann James  
Assistant Dean of Students  
Bob Alston

#### University Police

Chief of Police  
John Gaffin (Interim)

### University Advancement

Vice President  
Eric C. Gentry

#### Advancement Services

Director  
Marilou Singleton

#### Donor Relations

Director  
Kathy Stewart

#### Government, Corporate and Foundation Engagement

Assistant Vice President  
Adam Caswell

#### NKU Foundation Administration

Executive Director  
Karen Zerhusen Krueer

#### University Development and Alumni Relations

Assistant Vice President  
Julie Dials  
Director of Alumni Programs and Councils  
Michelle McMullen  
Director of Annual Giving  
Lori Cox  
Director of Development, College of Arts and Sciences (CAS)  
Kelly Jones  
Director of Development, Haile/US Bank College of Business  
Jey Marks  
Director of Development, College of Education and Human Services (COEHS)  
Cynthia Siddens  
Director of Development, College of Health Professions (CHP)  
Tara Widener  
Director of Advancement, College of Informatics (COI)  
Kendall Fisher  
Director of Development  
(vacant)

#### University Marketing & Communications

Assistant Vice President  
Kelly Martin  
University Communications  
Chris Cole  
Public Relations  
Amanda Nageleisen  
Marketing Strategy  
Jim Nilson

#### WNKU-FM Radio

General Manager  
Sean O'Mealy  
Marketing & Development  
Aaron Sharpe

Approved by the NKU Board of Regents  
Effective September 8, 2016

<sup>1</sup>This chart includes functional areas at not less than the director level.