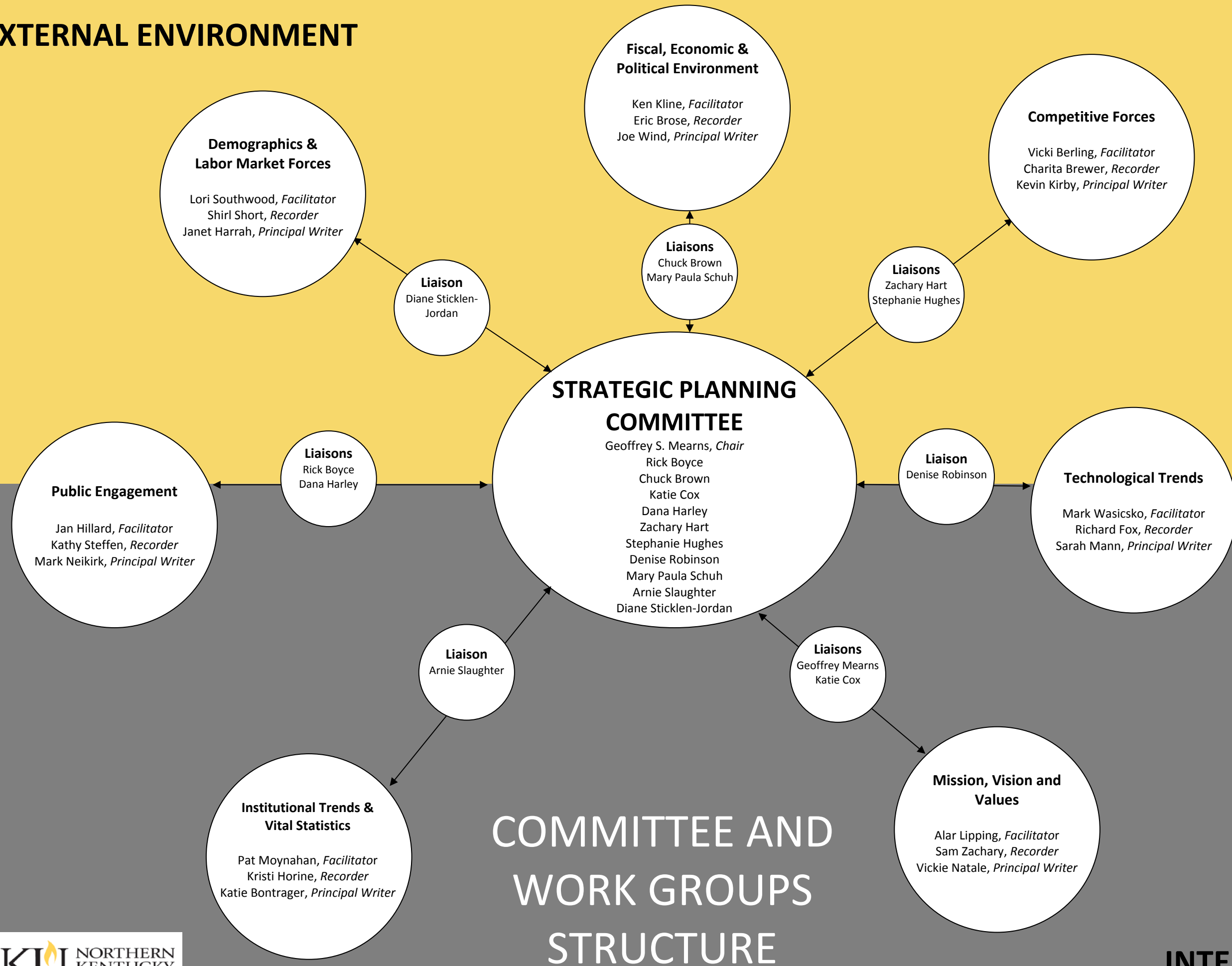


EXTERNAL ENVIRONMENT



COMMITTEE AND WORK GROUPS STRUCTURE

Focus of Work Groups

Competitive Forces: Gather, review, and analyze data and other background materials on competitive forces that are influencing the future of the university, including but not limited to, regional and state competition; non-profit and for-profit higher education providers; statewide adult learner initiatives; and Massive Open Online Courses (MOOCs).

Technological Trends: Gather, review, and analyze data and other background materials on technological trends that are influencing the future of the university, including, but not limited to, the impact of technology on teaching and learning; the impact of technology on the delivery of coursework; the issues around big data; and technological issues impacting administrative functions and the operations of the university.

Mission, Vision and Values: Review and discuss NKU's mission, vision, and values statements; compile and review similar statements for other public comprehensive metropolitan universities as well as other public institutions in Kentucky.

Institutional Trends and Vital Statistics: Compile, analyze, and synthesize institutional enrollment trends for undergraduates, graduates, and law school; changes in student profile such as those who are minority, low income, international, residential, out-of-state and older working adults; shift in majors and mix of program offerings; faculty and staff data; physical facilities; comparisons with other Kentucky regional institutions and benchmark institutions; and other institutional statistics and trends.

Public Engagement: Gather and review information about public engagement and regional stewardship activities of the university, including, but not limited to, centers and institutes; community partnerships; economic development initiatives; and service learning.

Demographic and Labor Market Forces: Gather, review, and analyze data and other background materials on demographic/labor market projections that are influencing the future of the university, including, but not limited to, regional population projections; regional college readiness data; regional/state educational attainment rates; high school graduation rates; regional occupational projections and labor market data; and other demographic/labor market projections.

Fiscal/Economic/Political Environment: Gather, review and analyze data and other background materials on factors from the fiscal/economic/political environment that are influencing the future of the university, including but not limited to, regional, state, and federal laws, regulations and mandates; state and federal legislative updates and proposals; local, state, and federal fiscal and economic issues; rules and regulations from the Council on Postsecondary Education; issues around the increasing public demand for transparency and accountability; issues concerning college affordability; and other public policy issues.