

## SAP-GUI 7.40 Update

### Location(s):

myNKU Portal – SAP GUI tab; SAP Logon

### Purpose:

The SAP-GUI update deployed on Tuesday, June 16, 2015 will bring all Windows users on campus up-to-date with the newest supported version of the SAP-GUI.

### What's NOT Changing:

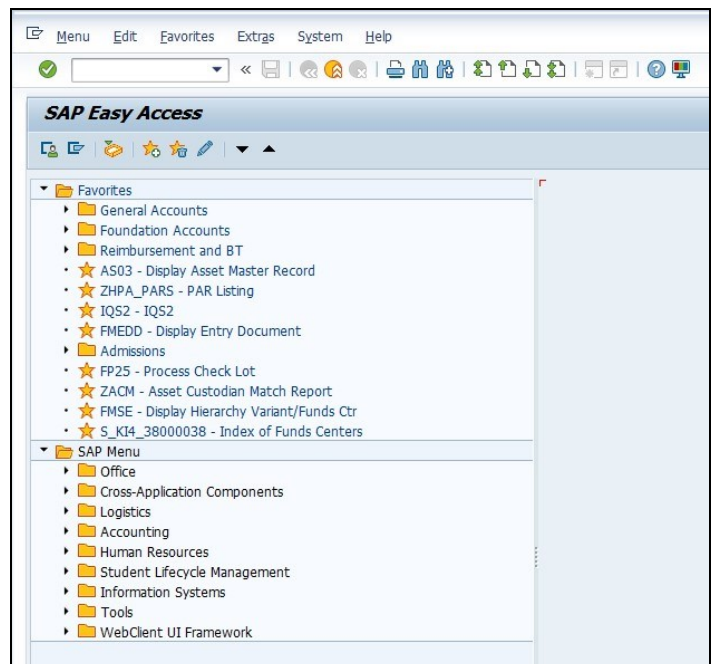
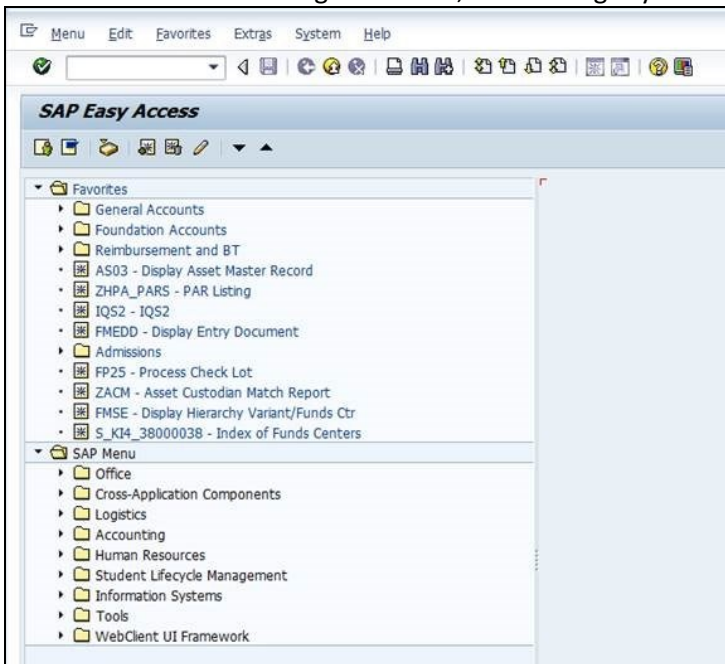
This update is only to the SAP-GUI, the user interface which allows you to access the myNKU back-end system and execute various transactions.

- This is not an upgrade to the system itself, or any functionality within it.
- You will still access the SAP-GUI in the same way you have before, whether using the link within the myNKU Portal, or the SAP Logon link from your desktop or start menu.
- Your “Favorites” transaction list and screen layouts will be the same.
- Buttons you use regularly will appear in the same locations they do now.
- This update will only affect Windows computers; Mac OS uses SAP-GUI for Java, and is not part of this update.

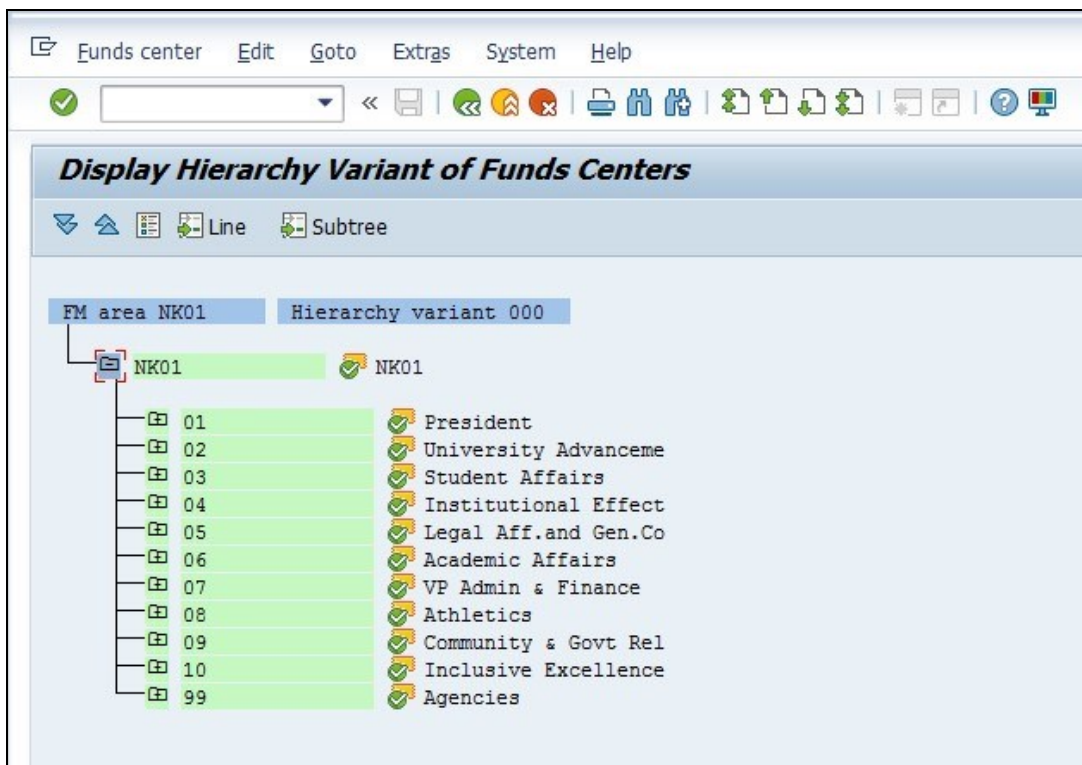
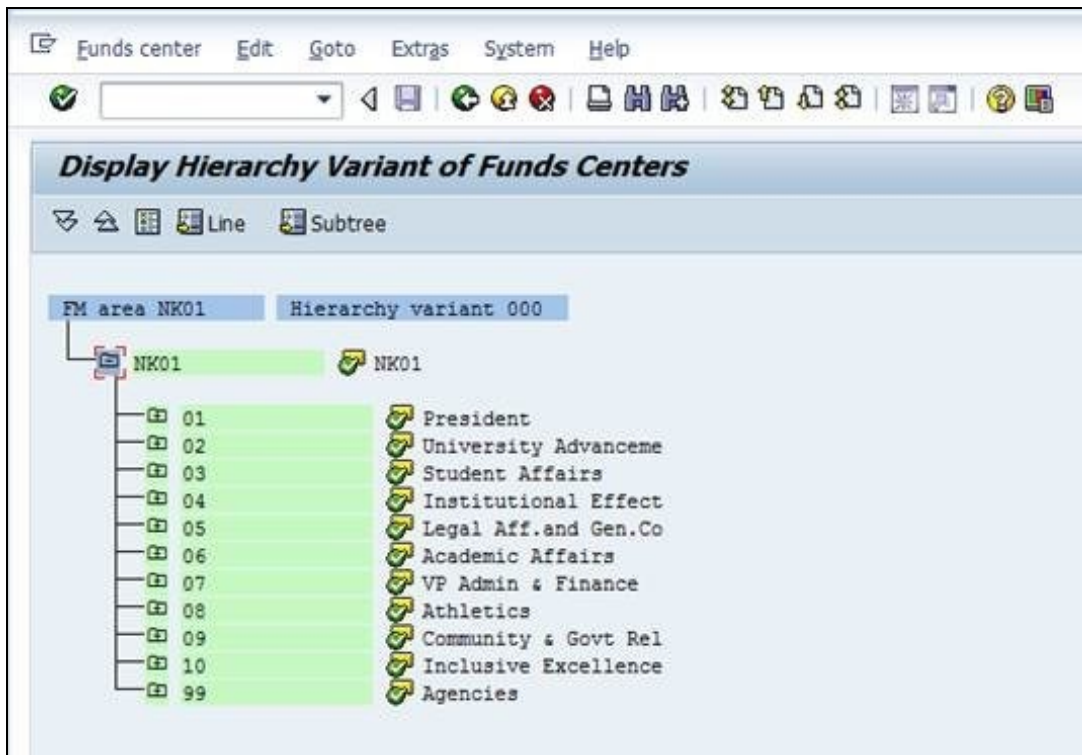
### What's Different:

The new version is a minor enhancement, but it does have a different appearance that might surprise users at first with its brighter, bolder colors. See the screen capture comparisons following for a few examples.

**Main Menu:** These images show the SAP Easy Access main menu, version 7.30 at left and 7.40 at right. Note that this particular user has several transactions saved in the Favorites list, and they remained in the same order in the new screen. Notice also the brighter colors, and the slightly different star icon in front of the Favorite transactions.



**FMSE – Display Hierarchy Variant of Fund Center:** These images show the tree of fund centers displayed using transaction code FMSE, with version 7.30 above and 7.40 below. You'll see again that the main difference is the brighter colors, but layout and location of buttons remains the same.



**ME51N – Create Purchase Requisition:** These images show the screen layout using transaction code ME51N, with version 7.30 above and 7.40 below. You'll see again that the main difference is the brighter colors, but layout and location of buttons remains the same.